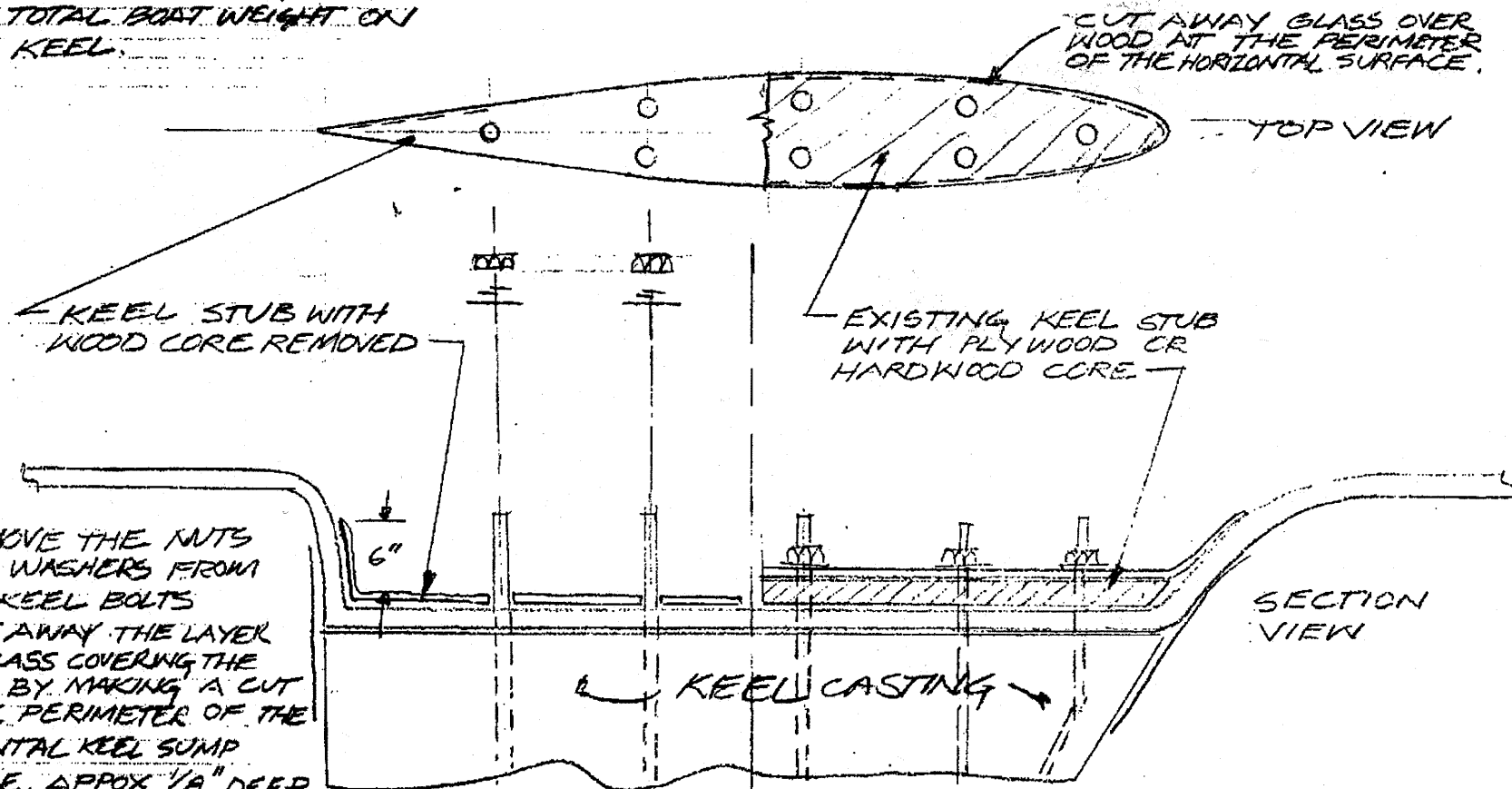


1) IT IS RECOMMENDED THIS REPAIR BE MADE WITH THE BOAT OUT OF THE WATER, PROPERLY SUPPORTED WITH APPROX 70% OF THE TOTAL BOAT WEIGHT ON THE KEEL.



- 2) REMOVE THE NUTS AND WASHERS FROM THE KEEL BOLTS
- 3) CUT AWAY THE LAYER OF GLASS COVERING THE WOOD, BY MAKING A CUT AT THE PERIMETER OF THE HORIZONTAL KEEL SUMP SURFACE, APPROX 1/8" DEEP
- 4) CHISEL OR PEEL THE GLASS FROM THE WOOD, CHISEL OUT THE WOOD BELOW DOWN TO THE FIBER GLASS, BENEATH. CLEAN AWAY LOOSE MATERIAL AND SAND SURFACE
- 5) MASK EXPOSED THREADS OF KEEL BOLTS
- 6) LAMINATE (3) LAYERS OF 1.5 OZ MAT AND 24 OZ ROVING ALTERNATELY LAPPING UP ONTO KEEL STUB SIDES APPROX 6"

- 7) AFTER LAMINATE IS CURED REMOVE TAPE FROM BOLT THREADS.
- 8) PAINT OUT KEEL SUMP WITH WHITE GEL COAT.
- 9) INSTALL WASHERS AND NUTS.
- 10) TORQUE BOLTS PER SCHEDULE.

Catalina Yachts

21200 VICTORY BLVD.
WOODLAND HILLS, CA.
91367-(818)884-7700

SCALE: ~
DATE: 2.10.96

APPROVED BY:

DRAWN BY

40

TITLE:

KEEL STUB WOOD REMOVAL PROCEDURE

BOAT:

TYPICAL PRE-1988 MODELS

DRAWING NUMBER

- 0