

Instructions for Parts Books

The heading at the top of the page will be the same for the picture of the parts as it is for the page with the part numbers.

Definition of column headings on part number pages:

REF.No → The number referring to the part on the picture page of the parts book.

Part No. → The number assigned to this part at the time of printing the parts book.

Description → Description of part.

Q'ty → Quantity of part used on that page.

S.No. → Serial number range of the equipment that this part will fit.

>= Your serial number should be greater than or equal to the number shown.

<= Your serial number should be lesser than or equal to the serial number shown.

I/C → Interchangeability of part shown.

↔ The part shown will work for the older and later serial number.

The part shown is not interchangeable with the other serial number.

← new for old

→ old for new

Remarks → Notes about this particular part. Sometimes this may say except [FR] or [CA]

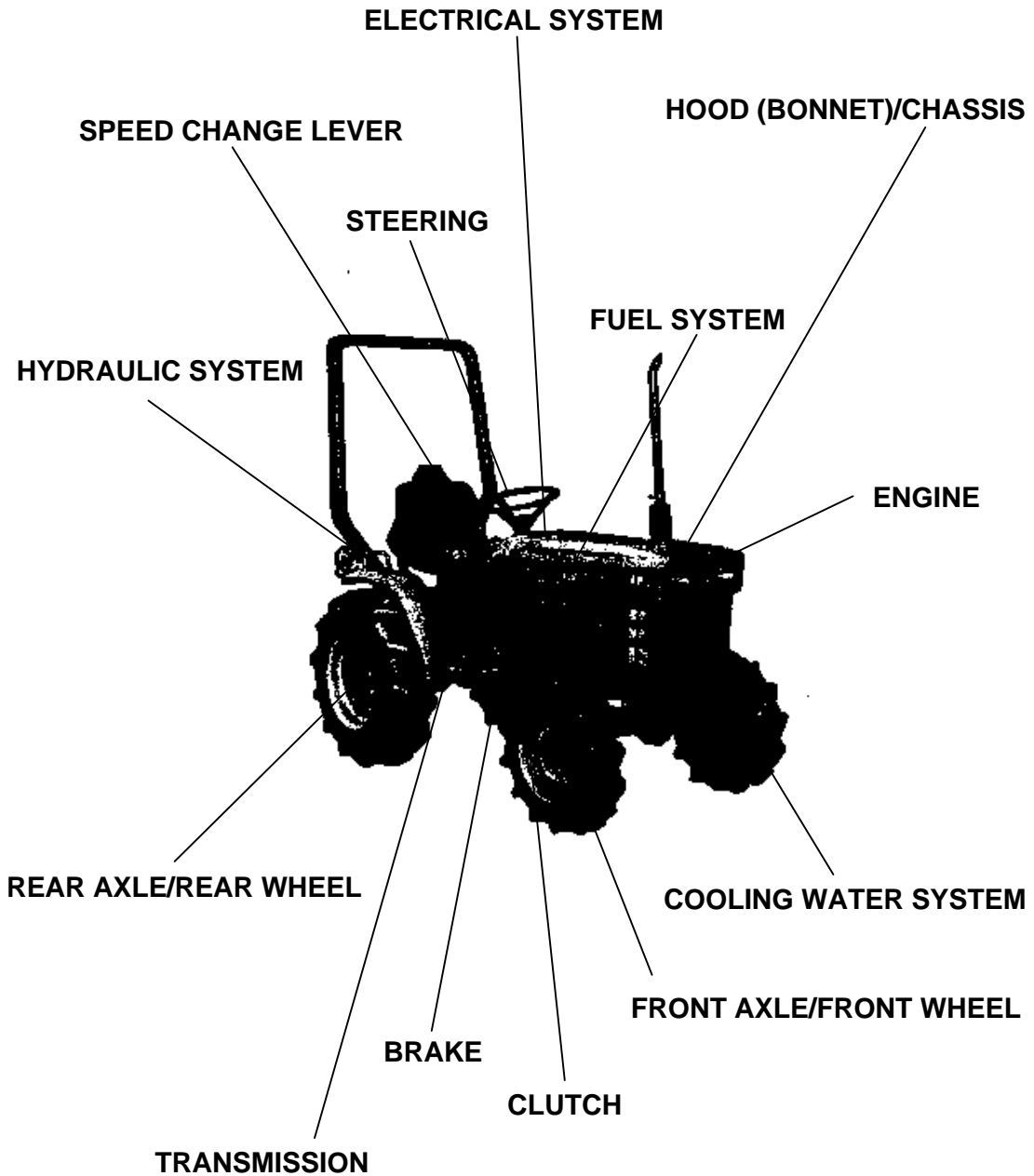
Note about Country Codes:

The parts books we use in the United States of America may also contain information about a part that would be different in another country. It is important that you are aware of the country codes in some instances.

| Symbol | Country |
|--------|--------------------------|
| A | United States of America |
| CA | Canada |
| FR | France |
| GR | Greece |
| PO | Portugal |
| AU | Australia |

If the remarks column says for example EXCEPT [FR] this part works in all countries except France. That means it will work here in the USA.

ALL PRODUCT INDEX
B7200E

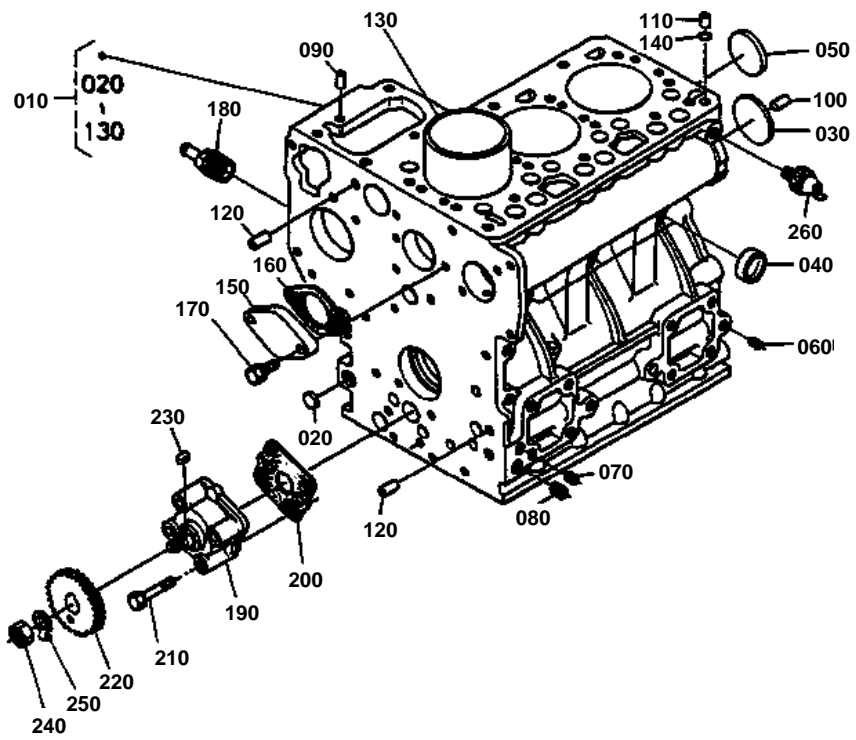


LABELS
ACCESSORIES

| Item | Part No. | Description | Book | |
|--------------------------------|--------------|--------------------------------|-------------------|----------|
| ENGINE | 01E002 | CRANKCASE | 100K0101 | |
| | 01E003 | OIL PAN | 100K0101 | |
| | 01E004 | CYLINDER HEAD | 100K0101 | |
| | 01E006 | GEAR CASE | 100K0101 | |
| | 01E007 | MAIN BEARING CASE | 100K0101 | |
| | 01E008 | CYLINDER HEAD COVER | 100K0101 | |
| | 01E009 | MANIFOLD | 100K0101 | |
| | 01E010 | VALVE/ROCKER ARM | 100K0101 | |
| | 01E011 | CAMSHAFT | 100K0101 | |
| | 01E012 | PISTON/CRANKSHAFT | 100K0101 | |
| | 01E013 | FLYWHEEL | 100K0101 | |
| | 01E014 | INJECTION PUMP | 100K0101 | |
| | 01E015 | NOZZLE HOLDER | 100K0101 | |
| | 01E016 | ENGINE STOP LEVER | 100K0101 | |
| | 01E017 | SPEED CONTROL PLATE | 100K0101 | |
| | 01E018 | GOVERNOR | 100K0101 | |
| | 01E019 | HYDRAULIC PUMP | 100K0101 | |
| | 01E021 | DYNAMO | 100K0101 | |
| | 01E022 | WATER FLANGE | 100K0101 | |
| | 01E023 | WATER PUMP | 100K0101 | |
| | 01E024 | INJECTION PUMP [SECTION PARTS] | 100K0101 | |
| | 01E025 | NOZZLE HOLDER [SECTION PARTS] | 100K0101 | |
| | 01E027 | DYNAMO [SECTION PARTS] | 100K0101 | |
| | 01E028 | HYDRAULIC PUMP [SECTION PARTS] | 100K0101 | |
| | TRANSMISSION | 01T001 | TRANSMISSION CASE | 100K0101 |
| | | 01T002 | PTO COVER | 100K0101 |
| | | 01T003 | COVER | 100K0101 |
| | | 01T004 | CASE COVER | 100K0101 |
| REAR AXLE/REAR WHEEL CLUTCH | 01T005 | REAR AXLE CASE | 100K0101 | |
| | 01T006 | CLUTCH ROD | 100K0101 | |
| TRANSMISSION | 01T007 | CLUTCH | 100K0101 | |
| | 01T008 | 2ND SHAFT | 100K0101 | |
| | 01T009 | 3RD SHAFT | 100K0101 | |
| | 01T010 | 4TH SHAFT,5TH SHAFT | 100K0101 | |
| | 01T011 | SPIRAL BEVEL SHAFT | 100K0101 | |
| | 01T012 | PTO SHAFT | 100K0101 | |
| | 01T013 | REVERSE SHAFT | 100K0101 | |
| REAR AXLE/REAR WHEEL | 01T014 | REAR DIFFERENTIAL | 100K0101 | |
| | 01T015 | REAR AXLE | 100K0101 | |
| | 01T016 | REAR WHEEL (9.5-16) | 100K0101 | |
| | 01T018 | REAR WHEEL (8-16) | 100K0101 | |
| | 01T019 | REAR WHEEL (29 X 12.00-15) | 100K0101 | |
| | 01T020 | REAR WHEEL (31 X 13.5-15) | 100K0101 | |
| | 01T021 | REAR WHEEL HUB | 100K0101 | |
| SPEED CHANGE LEVER | 01T022 | SPEED CHANGE FORK | 100K0101 | |
| | 01T023 | MAIN SPEED CHANGE | 100K0101 | |
| | 01T024 | AUX. SPEED CHANGE | 100K0101 | |
| | 01T025 | ROTARY SPEED CHANGE FORK | 100K0101 | |
| BRAKE HYDRAULIC SYSTEM | 01T026 | BRAKE | 100K0101 | |
| | 01T027 | HYDRAULIC PIPE | 100K0101 | |
| | 01T029 | HYDRAULIC BLOCK | 100K0101 | |
| | 01T030 | HYDRAULIC 1 | 100K0101 | |
| | 01T031 | HYDRAULIC 2 | 100K0101 | |
| | 01T032 | STEERING | 100K0101 | |
| STEERING | 01T032 | STEERING | 100K0101 | |
| SPEED CHANGE LEVER | 01T033 | SPEED CHANGE LEVER | 100K0101 | |
| BRAKE | 01T034 | BRAKE ROD | 100K0101 | |

| Item | Part No. | Description | Book |
|------------------------|----------|--------------------------------------|----------|
| BRAKE | 01T035 | PEDAL | 100K0101 |
| TRANSMISSION | 01T036 | RELEASE ROD | 100K0101 |
| HOOD (BONNET)/CHASSIS | 01T037 | SEAT | 100K0101 |
| LABELS | 01T038 | LABEL | 100K0101 |
| CLUTCH | 01T039 | CLUTCH HOUSING/STEP/STARTER | 100K0101 |
| HOOD (BONNET)/CHASSIS | 01T040 | FRONT AXLE FRAME | 100K0101 |
| COOLING WATER SYSTEM | 01T041 | RADIATOR | 100K0101 |
| HOOD (BONNET)/CHASSIS | 01T042 | FENDER | 100K0101 |
| | 01T043 | HOOD | 100K0101 |
| ELECTRICAL SYSTEM | 01T044 | BATTERY | 100K0101 |
| ENGINE | 01T046 | MUFFLER AND MUFFLER PIPE [A],[CA] | 100K0101 |
| FUEL SYSTEM | 01T047 | FUEL TANK | 100K0101 |
| | 01T048 | FUEL PIPE | 100K0101 |
| | 01T049 | FUEL FILTER | 100K0101 |
| ELECTRICAL SYSTEM | 01T050 | PANEL | 100K0101 |
| | 01T051 | PANEL SWITCH | 100K0101 |
| FUEL SYSTEM | 01T052 | DECOMPRESS WIRE AND ENGINE STOP WIRE | 100K0101 |
| ELECTRICAL SYSTEM | 01T053 | FLASHER LIGHT/TAIL LIGHT/HEAD LAMP | 100K0101 |
| FUEL SYSTEM | 01T054 | AIR CLEANER | 100K0101 |
| FRONT AXLE/FRONT WHEEL | 01T055 | FRONT AXLE | 100K0101 |
| | 01T056 | FRONT WHEEL HUB | 100K0101 |
| | 01T057 | FRONT WHEEL (5.00-10) | 100K0101 |
| | 01T059 | FRONT WHEEL (18 X 9.50-8) | 100K0101 |
| HYDRAULIC SYSTEM | 01T080 | 3-POINT LINKAGE | 100K0101 |
| ELECTRICAL SYSTEM | 01T081 | DYNAMO 1 [OPTION] | 100K0101 |
| | 01T082 | DYNAMO 2 [OPTION] | 100K0101 |
| HYDRAULIC SYSTEM | 01T083 | POSITION CONTROL VALVE [OPTION] | 100K0101 |
| | 01T084 | HYDRAULIC OUTLET [OPTION] | 100K0101 |
| ENGINE | 01T085 | HORIZON MUFFLER [OPTION] | 100K0101 |
| ELECTRICAL SYSTEM | 01T086 | WORKING LIGHT [OPTION] | 100K0101 |
| TRANSMISSION | 01T087 | FLANGE F.PTO [OPTION] | 100K0101 |
| HYDRAULIC SYSTEM | 01T089 | CONTROL VALVE [SECTION PARTS] | 100K0101 |
| | 01T090 | CONTROL VALVE [SECTION PARTS] | 100K0101 |
| ELECTRICAL SYSTEM | 01T091 | STARTER [SECTION PARTS] | 100K0101 |
| | 01T092 | DYNAMO [SECTION PARTS] | 100K0101 |
| ACCESSORIES | 01T095 | ACCESSORIES AND SERVICE PARTS | 100K0101 |

CRANKCASE



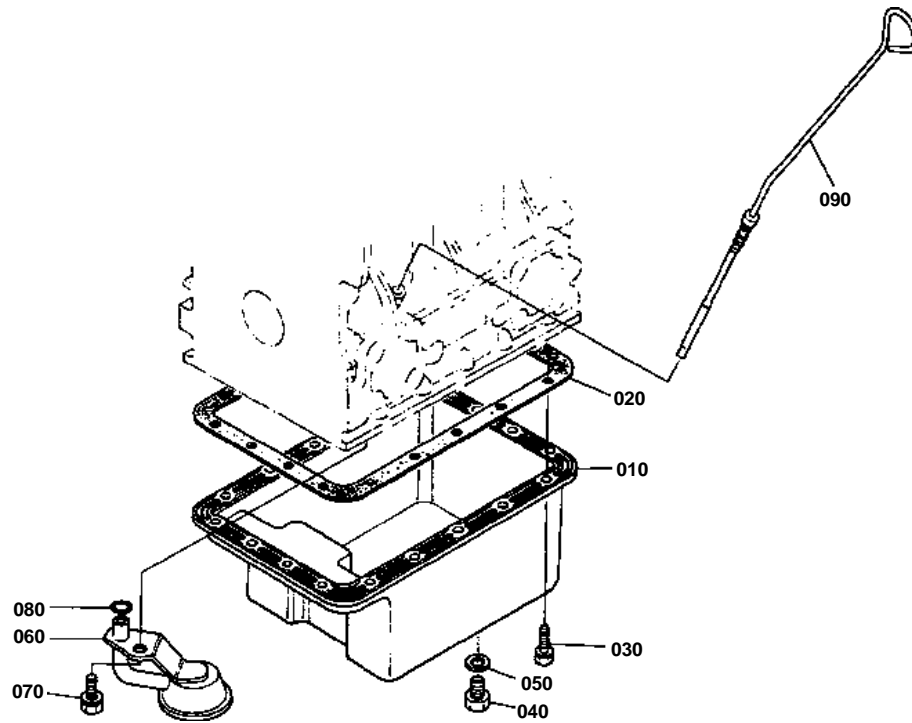


CRANKCASE

↔ Interchangeable; ≠ not interchangeable; ← new for old; → old for new

| REF.No | Part No. | Description | Q'ty | S.No. | I/C | REMARKS | Weight (kgf) | Weight (lb) |
|--------|-------------|---------------------|------|-------|-----|---------|--------------|-------------|
| 010 | 15533-01010 | COMP.CRANKCASE | 1 | | | | 26 | 57.2 |
| 020 | 06311-75015 | PLUG | 3 | | | | 0.002 | 0.0044 |
| 030 | 06311-75040 | PLUG | 1 | | | | 0.02 | 0.044 |
| 040 | 15321-96260 | CAP,SEALING | 5 | | | | 0.014 | 0.0308 |
| 050 | 15221-03490 | CAP,SEALING | 1 | | | | 0.02 | 0.044 |
| 060 | 15261-96010 | PLUG | 6 | | | | 0.002 | 0.0044 |
| 070 | 15521-96020 | PLUG | 3 | | | | 0.003 | 0.0066 |
| 080 | 15521-96030 | PLUG | 1 | | | | 0.007 | 0.0154 |
| 090 | 05012-00609 | PIN,STRAIGHT | 2 | | | | 0.003 | 0.0066 |
| 100 | 05012-00814 | PIN,STRAIGHT | 2 | | | | 0.006 | 0.0132 |
| 110 | 15221-33650 | PIN,PIPE | 1 | | | | 0.004 | 0.0088 |
| 120 | 15231-33960 | PIN,PIPE | 2 | | | | 0.001 | 0.0022 |
| 130 | 15531-02310 | LINER,CYLINDER | 3 | | | | 0.42 | 0.924 |
| 140 | 15221-33700 | O RING | 1 | | | | 0.001 | 0.0022 |
| 150 | 15261-73910 | COVER,WATER | 1 | | | | 0.13 | 0.286 |
| 160 | 15261-73920 | GASKET,WATER COVER | 1 | | | | 0 | 0 |
| 170 | 01023-50618 | BOLT | 2 | | | | 0.006 | 0.0132 |
| 180 | 15531-73170 | JOINT,DRAIN PIPE | 1 | | | | 0.145 | 0.319 |
| 190 | 15261-35010 | ASSY PUMP,OIL | 1 | | | | 0.32 | 0.704 |
| 200 | 15261-35150 | GASKET,OIL PUMP | 1 | | | | 0 | 0 |
| 210 | 15261-91022 | BOLT | 4 | | | | 0.012 | 0.0264 |
| 220 | 15954-35660 | GEAR,OIL PUMP DRIVE | 1 | | | | 0.14 | 0.308 |
| 230 | 05712-00410 | KEY,FEATHER | 1 | | | | 0.001 | 0.0022 |
| 240 | 02016-50100 | NUT | 1 | | | | 0.009 | 0.0198 |
| 250 | 04211-50100 | WASHER,CLAW | 1 | | | | 0.002 | 0.0044 |
| 260 | 15231-39010 | SWITCH,OIL | 1 | | | | 0 | 0 |

OIL PAN



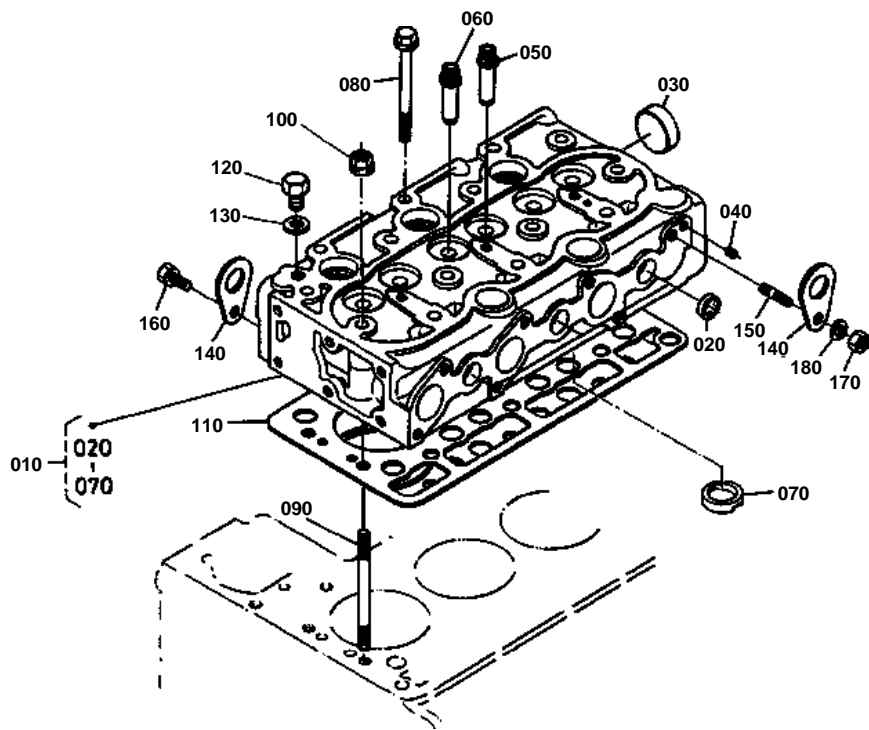


OIL PAN

↔ Interchangeable; ≠ not interchangeable; ← new for old; → old for new

| REF.No | Part No. | Description | Q'ty | S.No. | I/C | REMARKS | Weight (kgf) | Weight (lb) |
|--------|-------------|-------------|------|-------|-----|---------|--------------|-------------|
| 010 | 15371-01614 | OIL PAN | 1 | | | | 1.1 | 2.42 |
| 020 | 15381-01620 | GASKET | 1 | | | | 0 | 0 |
| 030 | 15381-91092 | BOLT | 18 | | | | 0.002 | 0.0044 |
| 040 | 15221-33750 | PLUG | 1 | | | | 0.032 | 0.0704 |
| 050 | 15109-33660 | GASKET | 1 | | | | 0.001 | 0.0022 |
| 060 | 15531-32110 | FILTER,OIL | 1 | | | | 0.185 | 0.407 |
| 070 | 01123-50816 | BOLT | 1 | | | | 0.011 | 0.0242 |
| 080 | 04811-00140 | RING | 1 | | | | 0.001 | 0.0022 |
| 090 | 15533-36410 | GAUGE,OIL | 1 | | | | 0.03 | 0.066 |

CYLINDER HEAD



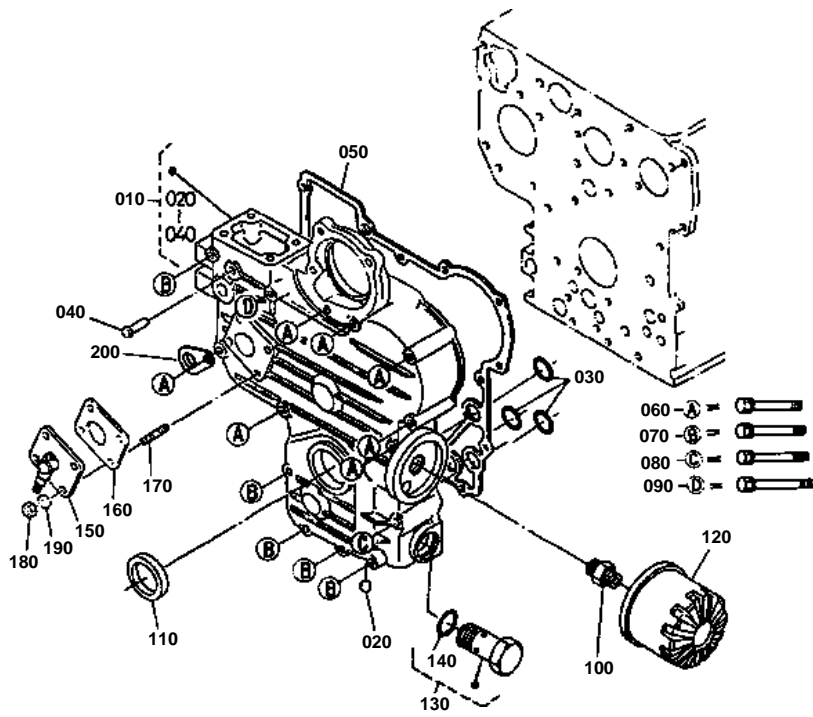


CYLINDER HEAD

↔ Interchangeable; ≠ not interchangeable; ← new for old; → old for new

| REF.No | Part No. | Description | Q'ty | S.No. | I/C | REMARKS | Weight (kgf) | Weight (lb) |
|--------|-------------|----------------------|------|-------|-----|---------|--------------|-------------|
| 010 | 15532-03040 | COMP.CYLINDER HEAD | 1 | | | | 9 | 19.8 |
| 020 | 15261-03370 | CAP,SEALING | 5 | | | | 0.005 | 0.011 |
| 030 | 15321-96260 | CAP,SEALING | 1 | | | | 0.014 | 0.0308 |
| 040 | 15261-96010 | PLUG | 2 | | | | 0.002 | 0.0044 |
| 050 | 15261-13540 | GUIDE,INLET VALVE | 3 | | | | 0.02 | 0.044 |
| 060 | 15261-13560 | GUIDE,EXHAUST VALVE | 3 | | | | 0.02 | 0.044 |
| 070 | 15261-03140 | ROOM,COMBUSTION | 3 | | | | 0.023 | 0.0506 |
| 080 | 19215-03450 | BOLT,CYLINDER HEAD | 12 | | | | 0.047 | 0.1034 |
| 090 | 19215-03412 | STUD,HEAD | 2 | | | | 0.044 | 0.0968 |
| 100 | 19215-03512 | NUT,HEAD | 2 | | | | 0.009 | 0.0198 |
| 110 | 15531-03313 | GASKET,CYLINDER HEAD | 1 | | | | 0 | 0 |
| 120 | 15000-36080 | PLUG,HEAD | 1 | | | | 0.03 | 0.066 |
| 130 | 04717-01600 | WASHER,WITH RUBBER | 1 | | | | 0.003 | 0.0066 |
| 140 | 15221-01750 | HOOK,ENGINE | 2 | | | | 0.04 | 0.088 |
| 150 | 01513-50816 | STUD | 1 | | | | 0.009 | 0.0198 |
| 160 | 01123-50816 | BOLT | 1 | | | | 0.011 | 0.0242 |
| 170 | 02156-50080 | NUT | 1 | | | | 0.004 | 0.0088 |
| 180 | 04512-50080 | WASHER,SPRING | 1 | | | | 0 | 0 |

GEAR CASE

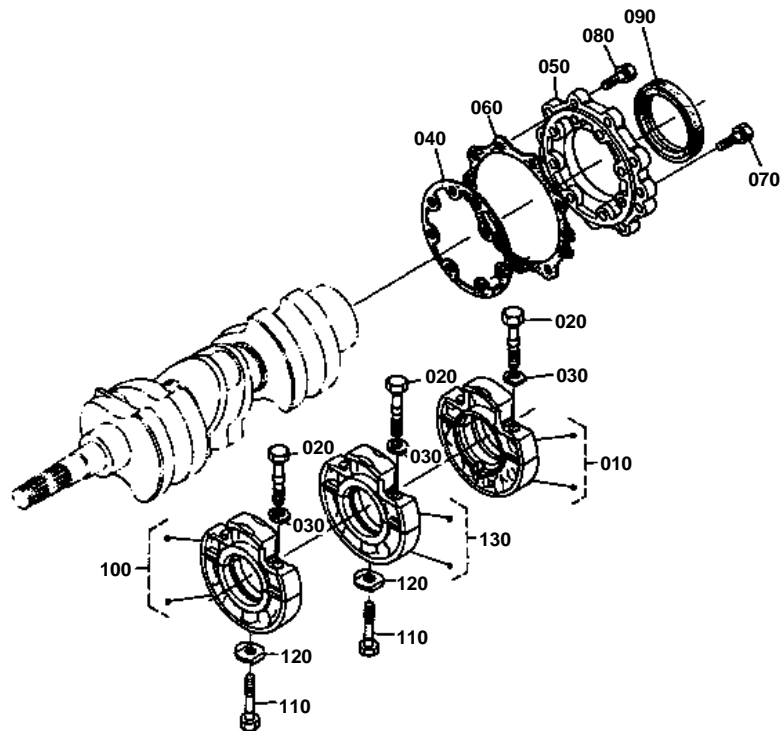


**GEAR CASE**

↔ Interchangeable; ≠ not interchangeable; ← new for old; → old for new

| REF.No | Part No. | Description | Q'ty | S.No. | I/C | REMARKS | Weight (kgf) | Weight (lb) |
|--------|-------------|--------------------|------|---------|-----|---------|--------------|-------------|
| 010 | 19264-04020 | COMP.CASE,GEAR | 1 | ≤369054 | | | 0 | 0 |
| 010 | 15752-04020 | COMP.CASE,GEAR | 1 | ≥369055 | ≠ | | 0 | 0 |
| 020 | 15261-96020 | PLUG | 2 | | | | 0 | 0 |
| 030 | 04811-06130 | RING | 3 | | | | 0.001 | 0.0022 |
| 040 | 15221-56280 | PIN,START SPRING | 1 | | | | 0.006 | 0.0132 |
| 050 | 15531-04130 | GASKET,GEAR CASE | 1 | | | | 0 | 0 |
| 060 | 01023-50660 | BOLT | 7 | | | | 0.01 | 0.022 |
| 070 | 01023-50665 | BOLT | 5 | | | | 0.015 | 0.033 |
| 080 | 01023-50670 | BOLT | 1 | | | | 0 | 0 |
| 090 | 01023-50675 | BOLT | 1 | | | | 0.01 | 0.022 |
| 100 | 15241-32290 | PIPE,JOINT | 1 | | | | 0.053 | 0.1166 |
| 110 | 09550-00008 | SEAL,OIL | 1 | ≤369054 | | | 0.01 | 0.022 |
| 110 | 15841-04140 | SEAL,OIL | 1 | ≥369055 | ≠ | | 0.012 | 0.0264 |
| 120 | 15241-32090 | ASSY CARTRIDGE,OIL | 1 | | | | 0.35 | 0.77 |
| 130 | 15261-36070 | ASSY VALVE,RELIEF | 1 | | | | 0.078 | 0.1716 |
| 140 | 04810-00150 | RING | 1 | | | | 0.001 | 0.0022 |
| 150 | 67111-58810 | ASSY CASE,GEAR | 1 | | | | 0.33 | 0.726 |
| 160 | 15221-88130 | GASKET | 1 | | | | 0 | 0 |
| 170 | 15221-88210 | STUD | 4 | | | | 0.005 | 0.011 |
| 180 | 02056-50060 | NUT | 4 | | | | 0.002 | 0.0044 |
| 190 | 04512-50060 | WASHER,SPRING | 4 | | | | 0 | 0 |
| 200 | 15531-72960 | CLAMP,PIPE | 1 | | | | 0.005 | 0.011 |
| 200 | 15532-72960 | CLAMP,PIPE | 1 | | | [CA] | 0.01 | 0.022 |

MAIN BEARING CASE



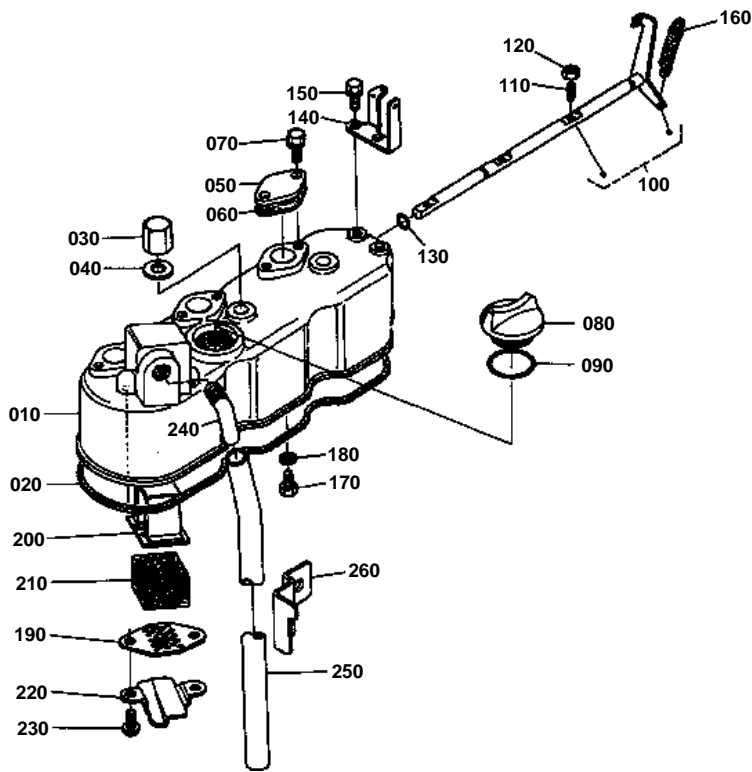


MAIN BEARING CASE

↔ Interchangeable; ≠ not interchangeable; ← new for old; → old for new

| REF.No | Part No. | Description | Q'ty | S.No. | I/C | REMARKS | Weight (kgf) | Weight (lb) |
|--------|-------------|---------------------|------|-------|-----|---------|--------------|-------------|
| 010 | 15261-04090 | ASSY CASE,MAIN BRG. | 1 | | | | 0.8 | 1.76 |
| 020 | 15261-04540 | BOLT,BEARING CASE | 6 | | | | 0.02 | 0.044 |
| 030 | 15261-04570 | WASHER,BEARING CASE | 6 | | | | 0.001 | 0.0022 |
| 040 | 15261-04360 | GASKET,BEARING CASE | 1 | | | | 0 | 0 |
| 050 | 15549-04810 | COVER,BEARING CASE | 1 | | | | 0.2 | 0.44 |
| 060 | 15261-04820 | GASKET | 1 | | | | 0 | 0 |
| 070 | 01023-50620 | BOLT | 9 | | | | 0.006 | 0.0132 |
| 080 | 01023-50625 | BOLT | 8 | | | | 0.007 | 0.0154 |
| 090 | 19215-04460 | SEAL,OIL | 1 | | | | 0.03 | 0.066 |
| 100 | 15261-04040 | ASSY CASE,MAIN BRG. | 1 | | | | 0.687 | 1.5114 |
| 110 | 15261-04560 | BOLT,BEARING CASE | 2 | | | | 0.02 | 0.044 |
| 120 | 15261-04590 | WASHER,BEARING CASE | 2 | | | | 0.004 | 0.0088 |
| 130 | 15381-04050 | ASSY CASE,MAIN BRG. | 1 | | | | 0.688 | 1.5136 |

CYLINDER HEAD COVER



REF.No.260 15951-0559-0



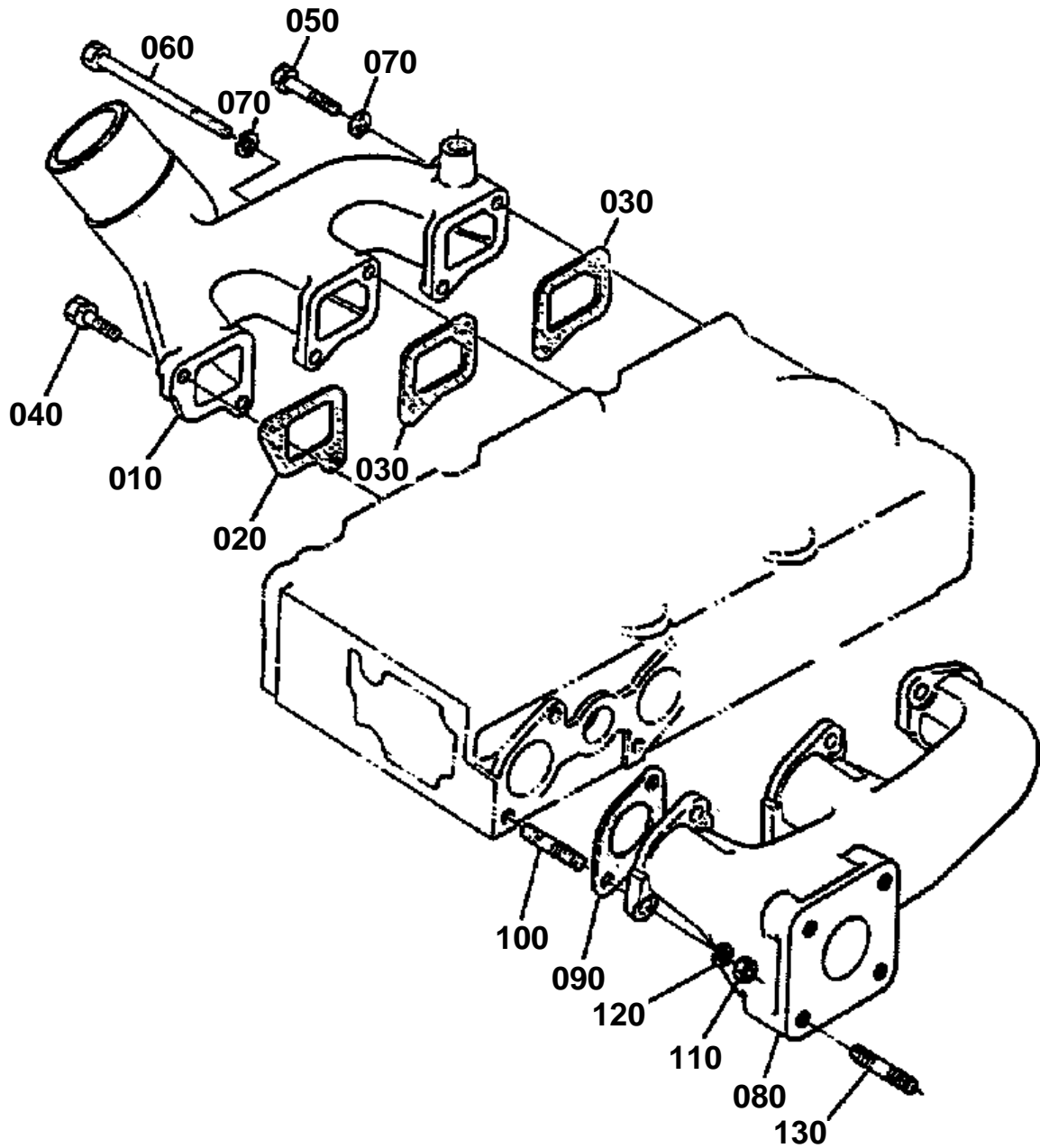


CYLINDER HEAD COVER

↔ Interchangeable; ≠ not interchangeable; ← new for old; → old for new

| REF.No | Part No. | Description | Q'ty | S.No. | I/C | REMARKS | Weight (kgf) | Weight (lb) |
|--------|-------------|---------------------|------|----------|-----|---------|--------------|-------------|
| 010 | 15532-14510 | COVER,CYL.HEAD | 1 | ≤=348691 | | | 0 | 0 |
| 010 | 15532-14540 | COVER,CYL.HEAD | 1 | ≥=348692 | ← | | 0.75 | 1.65 |
| 020 | 15381-14520 | GASKET,HEAD COVER | 1 | | | | 0.005 | 0.011 |
| 030 | 15951-92330 | NUT,CAP | 3 | | | | 0 | 0 |
| 040 | 15951-96660 | GASKET | 3 | | | | 0.001 | 0.0022 |
| 050 | 15261-66630 | COVER | 3 | | | | 0.023 | 0.0506 |
| 060 | 15261-66640 | GASKET | 3 | | | | 0 | 0 |
| 070 | 01023-50614 | BOLT | 6 | | | | 0.005 | 0.011 |
| 080 | 15221-33140 | PLUG,OIL FILLER | 1 | | | | 0.038 | 0.0836 |
| 090 | 04811-50300 | RING | 1 | | | | 0.001 | 0.0022 |
| 100 | 15531-66040 | COMP.SHAFT,DECOMP. | 1 | ≤=348691 | | | 0.2 | 0.44 |
| 100 | 15532-66040 | COMP.SHAFT,DECOMP. | 1 | ≥=348692 | ≠ | | 0.2 | 0.44 |
| 100 | 15531-66040 | COMP.SHAFT,DECOMP. | 1 | ≥=373347 | ≠ | | 0.2 | 0.44 |
| 110 | 15261-66350 | BOLT,DECOMPRESS | 3 | | | | 0.002 | 0.0044 |
| 120 | 02056-50050 | NUT | 3 | | | | 0.002 | 0.0044 |
| 130 | 04811-00080 | RING | 1 | | | | 0.001 | 0.0022 |
| 140 | 15261-66190 | HOLDER,DECOMP.WIRE | 1 | | | | 0.03 | 0.066 |
| 150 | 01023-50614 | BOLT | 2 | | | | 0.005 | 0.011 |
| 160 | 15221-66280 | SPRING,DECOMPRESS | 1 | | | | 0.008 | 0.0176 |
| 170 | 15221-66410 | BOLT | 1 | | | | 0.005 | 0.011 |
| 180 | 04512-50060 | WASHER,SPRING | 1 | | | | 0 | 0 |
| 190 | 15951-05140 | PLATE,ELEMENT | 1 | | | | 0.005 | 0.011 |
| 200 | 15521-05150 | PLATE,ELEMENT | 1 | | | | 0.01 | 0.022 |
| 210 | 15521-05670 | ELEMENT,BREATHER | 1 | | | | 0.01 | 0.022 |
| 220 | 15951-05370 | OIL SHIELD,BREATHER | 1 | | | | 0.005 | 0.011 |
| 230 | 03024-50510 | SCREW | 2 | | | | 0.002 | 0.0044 |
| 240 | 15521-05550 | JOINT,BREATHER PIPE | 1 | | | | 0.04 | 0.088 |
| 250 | 15261-05510 | PIPE,BREATHER | 1 | | | | 0.069 | 0.1518 |
| 260 | 15531-05580 | CLAMP,PIPE | 1 | | | | 0.019 | 0.0418 |

MANIFOLD

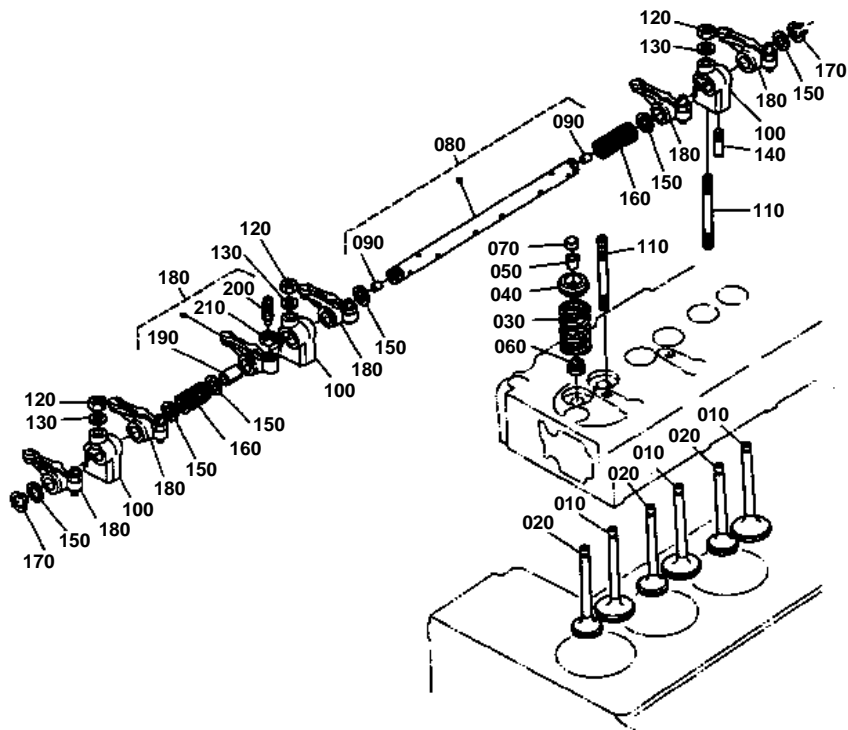


**MANIFOLD**

↔ Interchangeable; ≠ not interchangeable; ← new for old; → old for new

| REF.No | Part No. | Description | Q'ty | S.No. | I/C | REMARKS | Weight (kgf) | Weight (lb) |
|--------|-------------|--------------------|------|-------|-----|---------|--------------|-------------|
| 010 | 15531-11760 | MANIFOLD,INLET | 1 | | | | 0.5 | 1.1 |
| 020 | 15261-11820 | GASKET | 1 | | | | 0 | 0 |
| 030 | 15261-11830 | GASKET | 2 | | | | 0 | 0 |
| 040 | 01023-50620 | BOLT | 4 | | | | 0.006 | 0.0132 |
| 050 | 01053-50660 | BOLT | 1 | | | | 0.014 | 0.0308 |
| 060 | 15381-91070 | BOLT | 1 | | | | 0.016 | 0.0352 |
| 070 | 04512-50060 | WASHER,SPRING | 2 | | | | 0 | 0 |
| 080 | 15531-12310 | MANIFOLD,EXHAUST | 1 | | | | 1.54 | 3.388 |
| 090 | 15261-12360 | GASKET,EX-MANIFOLD | 3 | | | | 0 | 0 |
| 100 | 15381-91532 | STUD | 6 | | | | 0.005 | 0.011 |
| 110 | 02056-50060 | NUT | 6 | | | | 0.002 | 0.0044 |
| 120 | 04512-50060 | WASHER,SPRING | 6 | | | | 0 | 0 |
| 130 | 01513-50822 | STUD | 4 | | | | 0.01 | 0.022 |

VALVE/ROCKER ARM

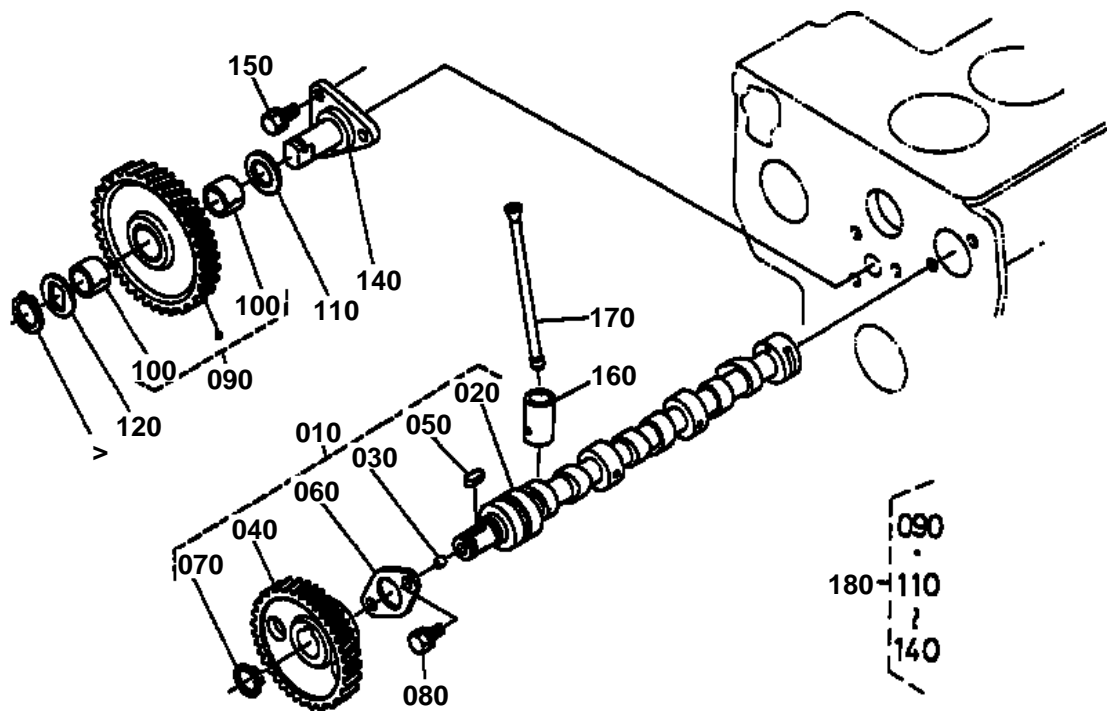


**VALVE/ROCKER ARM**

↔ Interchangeable; ≠ not interchangeable; ← new for old; → old for new

| REF.No | Part No. | Description | Q'ty | S.No. | I/C | REMARKS | Weight (kgf) | Weight (lb) |
|--------|-------------|---------------------|------|-------|-----|---------|--------------|-------------|
| 010 | 15393-13110 | VALVE,INLET | 3 | | | | 0.048 | 0.1056 |
| 020 | 15393-13120 | VALVE,EXHAUST | 3 | | | | 0.048 | 0.1056 |
| 030 | 15261-13240 | SPRING,VALVE | 6 | | | | 0.02 | 0.044 |
| 040 | 15261-13330 | RETAINER,VALVE SP. | 6 | | | | 0 | 0 |
| 050 | 15261-13360 | COLLET,VALVE SPRING | 6 | | | | 0.004 | 0.0088 |
| 060 | 15261-13150 | SEAL,VALVE STEM | 6 | | | | 0.001 | 0.0022 |
| 070 | 15261-13280 | CAP,VALVE | 6 | | | | 0 | 0 |
| 080 | 15381-14053 | ASSY SHAFT,R-ARM | 1 | | | | 0.135 | 0.297 |
| 090 | 15381-93610 | SCREW | 2 | | | | 0.001 | 0.0022 |
| 100 | 15381-14350 | BRACKET,ROCKER ARM | 3 | | | | 0.05 | 0.11 |
| 110 | 15952-14410 | STUD | 3 | | | | 0 | 0 |
| 120 | 15261-92010 | NUT | 3 | | | | 0.005 | 0.011 |
| 130 | 15261-94010 | WASHER,PLAIN | 3 | | | | 0.002 | 0.0044 |
| 140 | 15261-14420 | SCREW,SET | 1 | | | | 0.002 | 0.0044 |
| 150 | 15261-14430 | WASHER | 6 | | | | 0.001 | 0.0022 |
| 160 | 15261-14310 | SPRING,ROCKER ARM | 2 | | | | 0.003 | 0.0066 |
| 170 | 04612-00110 | CIR-CLIP,EXTERNAL | 2 | | | | 0.001 | 0.0022 |
| 180 | 19264-14030 | ASSY ROCKER ARM | 6 | | | | 0 | 0 |
| 190 | 19264-14180 | BUSH,ROCKER ARM | 6 | | | | 0.005 | 0.011 |
| 200 | 15261-14232 | SCREW,ADJUSTING | 6 | | | | 0.006 | 0.0132 |
| 210 | 15261-14240 | NUT | 6 | | | | 0.002 | 0.0044 |

CAMSHAFT

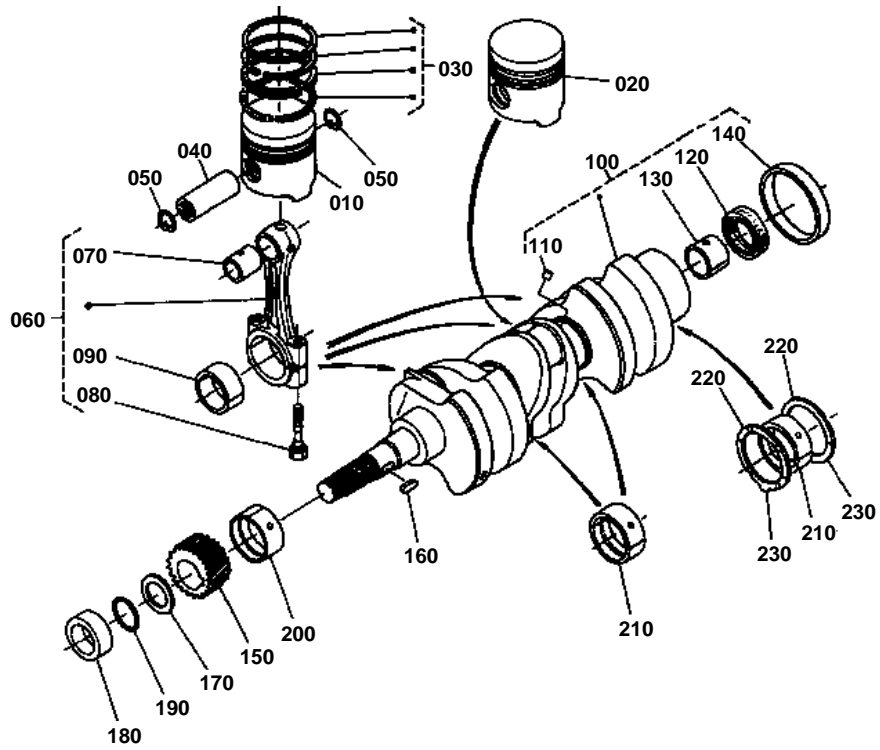


**CAMSHAFT**

↔ Interchangeable; ≠ not interchangeable; ← new for old; → old for new

| REF.No | Part No. | Description | Q'ty | S.No. | I/C | REMARKS | Weight (kgf) | Weight (lb) |
|--------|-------------|--------------------|------|----------|-----|---------|--------------|-------------|
| 010 | 15381-16010 | ASSY CAMSHAFT | 1 | | | | 1.045 | 2.299 |
| 020 | 15381-16110 | COMP. CAMSHAFT | 1 | | | | 0.965 | 2.123 |
| 030 | 15261-96880 | PLUG,BLIND | 2 | | | | 0.002 | 0.0044 |
| 040 | 15261-16510 | GEAR,CAMSHAFT | 1 | | | | 0.354 | 0.7788 |
| 050 | 05712-00515 | KEY,FEATHER | 1 | | | | 0.003 | 0.0066 |
| 060 | 15261-16270 | STOPPER,CAMSHAFT | 1 | | | | 0.034 | 0.0748 |
| 070 | 04612-00180 | CIR-CLIP,EXTERNAL | 1 | | | | 0.001 | 0.0022 |
| 080 | 01023-50614 | BOLT | 2 | | | | 0.005 | 0.011 |
| 090 | 15261-24010 | COMP.GEAR,IDLE | 1 | ←=407506 | | | 0.59 | 1.298 |
| 090 | 15532-24010 | COMP.GEAR,IDLE | 1 | >=407507 | ≠ | | 0.63 | 1.386 |
| 100 | 15261-24980 | BUSH,IDLE GEAR | 2 | ←=407506 | | | 0.006 | 0.0132 |
| 100 | 15532-24980 | BUSH,IDLE GEAR | 2 | >=407507 | ≠ | | 0.011 | 0.0242 |
| 110 | 15261-24360 | COLLAR,IDLE GEAR | 1 | ←=407506 | | | 0.008 | 0.0176 |
| 110 | 15532-24360 | COLLAR,IDLE GEAR | 1 | >=407507 | ≠ | | 0.01 | 0.022 |
| 120 | 15261-24370 | COLLAR,IDLE GEAR | 1 | ←=407506 | | | 0.008 | 0.0176 |
| 120 | 15532-24370 | COLLAR,IDLE GEAR | 1 | >=407507 | ≠ | | 0.01 | 0.022 |
| 130 | 15261-24320 | CIR-CLIP,IDLE GEAR | 1 | ←=407506 | | | 0.004 | 0.0088 |
| 130 | 15532-24320 | CIR-CLIP,IDLE GEAR | 1 | >=407507 | ≠ | | 0.003 | 0.0066 |
| 140 | 15261-24250 | SHAFT,IDLE GEAR | 1 | ←=407506 | | | 0.2 | 0.44 |
| 140 | 15532-24250 | SHAFT,IDLE GEAR | 1 | >=407507 | ≠ | | 0.275 | 0.605 |
| 150 | 01023-50616 | BOLT | 3 | | | | 0.005 | 0.011 |
| 160 | 15261-15550 | TAPPET | 6 | | | | 0.03 | 0.066 |
| 170 | 15261-15110 | ROD,PUSH | 6 | | | | 0.022 | 0.0484 |
| 180 | 15532-99340 | ASSY GEAR,IDLE | 1 | >=1001 | | | 0.9 | 1.98 |

PISTON/CRANKSHAFT



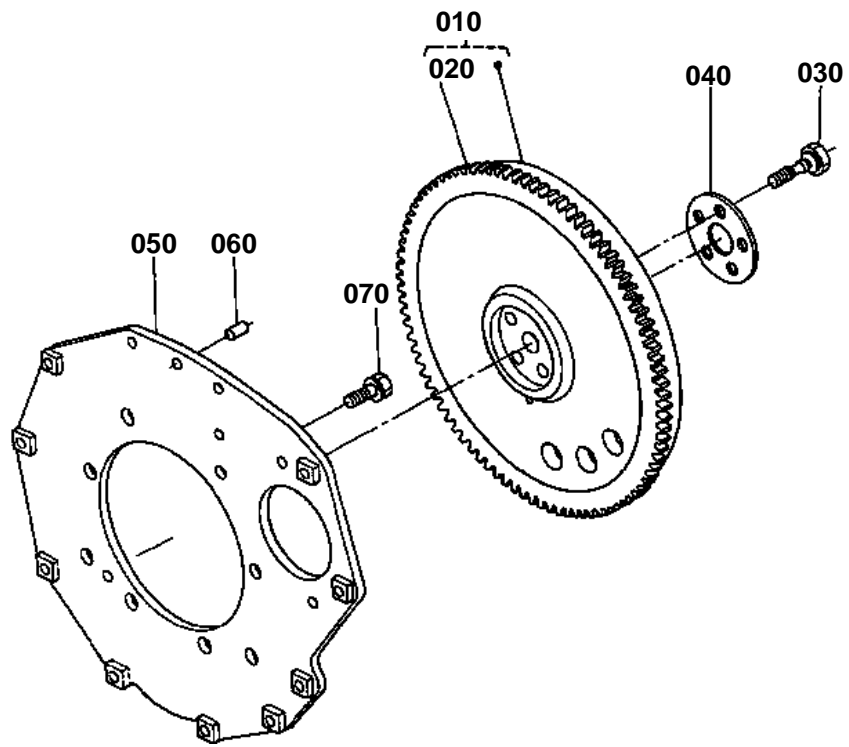


PISTON/CRANKSHAFT

↔ Interchangeable; ≠ not interchangeable; ← new for old; → old for new

| REF.No | Part No. | Description | Q'ty | S.No. | I/C | REMARKS | Weight (kgf) | Weight (lb) |
|--------|-------------|---------------------|------|----------|-----|---------|--------------|-------------|
| 010 | 15532-21110 | PISTON | 2 | | | STD | 0.365 | 0.803 |
| 010 | 15532-21910 | PISTON | 2 | | | +0.5 | 0.365 | 0.803 |
| 020 | 15531-21123 | PISTON | 1 | | | STD | 0.35 | 0.77 |
| 020 | 15531-21922 | PISTON | 1 | | | +0.5 | 0.37 | 0.814 |
| 030 | 15531-21050 | ASSY PISTON RING | 3 | | | STD | 0.046 | 0.1012 |
| 030 | 15531-21090 | ASSY PISTON RING | 3 | | | +0.5 | 0.03 | 0.066 |
| 040 | 15261-21310 | PIN,PISTON | 3 | | | | 0.102 | 0.2244 |
| 050 | 15261-21330 | CIR-CLIP,PISTON PIN | 6 | | | | 0.001 | 0.0022 |
| 060 | 15531-22010 | ASSY CONNECTING ROD | 3 | | | | 0 | 0 |
| 070 | 15261-21980 | BUSH,PISTON PIN | 3 | | | | 0.012 | 0.0264 |
| 080 | 15261-22140 | BOLT,CONNECTING ROD | 6 | | | | 0 | 0 |
| 090 | 15531-22310 | METAL,CRANKPIN | 3 | | | STD | 0 | 0 |
| 090 | 15531-22970 | METAL,CRANKPIN | 3 | | | -0.2 | 0 | 0 |
| 090 | 15531-22980 | METAL,CRANKPIN | 3 | | | -0.4 | 0 | 0 |
| 100 | 15532-23010 | COMP.CRANKSHAFT | 1 | <=369054 | | | 8 | 17.6 |
| 100 | 15752-23010 | COMP.CRANKSHAFT | 1 | >=369055 | ≠ | | 8 | 17.6 |
| 110 | 15131-01380 | PLUG,PIN | 3 | | | | 0.001 | 0.0022 |
| 120 | 09400-14247 | SEAL,OIL | 1 | | | | 0.004 | 0.0088 |
| 130 | 66621-14120 | BEARING | 1 | | | | 0.006 | 0.0132 |
| 140 | 19215-23280 | SLEEVE,CRANKSHAFT | 1 | | | | 0.05 | 0.11 |
| 150 | 15261-24110 | GEAR,CRANKSHAFT | 1 | <=369054 | | | 0.164 | 0.3608 |
| 150 | 15752-24110 | GEAR,CRANKSHAFT | 1 | >=369055 | ≠ | | 0.046 | 0.1012 |
| 160 | 05712-00515 | KEY,FEATHER | 1 | | | | 0.003 | 0.0066 |
| 170 | 15261-23310 | SLINGER,OIL | 1 | <=369054 | | | 0.008 | 0.0176 |
| 170 | 15752-23310 | SLINGER,OIL | 1 | >=369055 | ≠ | | 0.002 | 0.0044 |
| 180 | 15532-23250 | COLLAR,CRANKSHAFT | 1 | <=369054 | | | 0.029 | 0.0638 |
| 180 | 15752-23250 | COLLAR,CRANKSHAFT | 1 | >=369055 | ≠ | | 0.043 | 0.0946 |
| 190 | 04811-10220 | RING | 1 | <=369054 | | | 0.001 | 0.0022 |
| 190 | 04811-05230 | RING | 1 | >=369055 | ≠ | | 0.001 | 0.0022 |
| 200 | 15261-23470 | METAL,CRANKSHAFT | 1 | | | STD | 0 | 0 |
| 200 | 15261-23910 | METAL,CRANKSHAFT | 1 | | | -0.2 | 0 | 0 |
| 200 | 15261-23920 | METAL,CRANKSHAFT | 1 | | | -0.4 | 0 | 0 |
| 210 | 15261-23480 | METAL,CRANKSHAFT | 3 | | | STD | 0 | 0 |
| 210 | 15261-23930 | METAL,CRANKSHAFT | 3 | | | -0.2 | 0 | 0 |
| 210 | 15261-23940 | METAL,CRANKSHAFT | 3 | | | -0.4 | 0 | 0 |
| 220 | 15261-23530 | METAL,SIDE | 2 | | | STD | 0.006 | 0.0132 |
| 220 | 15261-23950 | METAL,SIDE | 2 | | | +0.2 | 0.006 | 0.0132 |
| 220 | 15261-23960 | METAL,SIDE | 2 | | | +0.4 | 0.007 | 0.0154 |
| 230 | 15261-23540 | METAL,SIDE | 2 | | | STD | 0.007 | 0.0154 |
| 230 | 15261-23970 | METAL,SIDE | 2 | | | +0.2 | 0.006 | 0.0132 |
| 230 | 15261-23980 | METAL,SIDE | 2 | | | +0.4 | 0.007 | 0.0154 |

FLYWHEEL



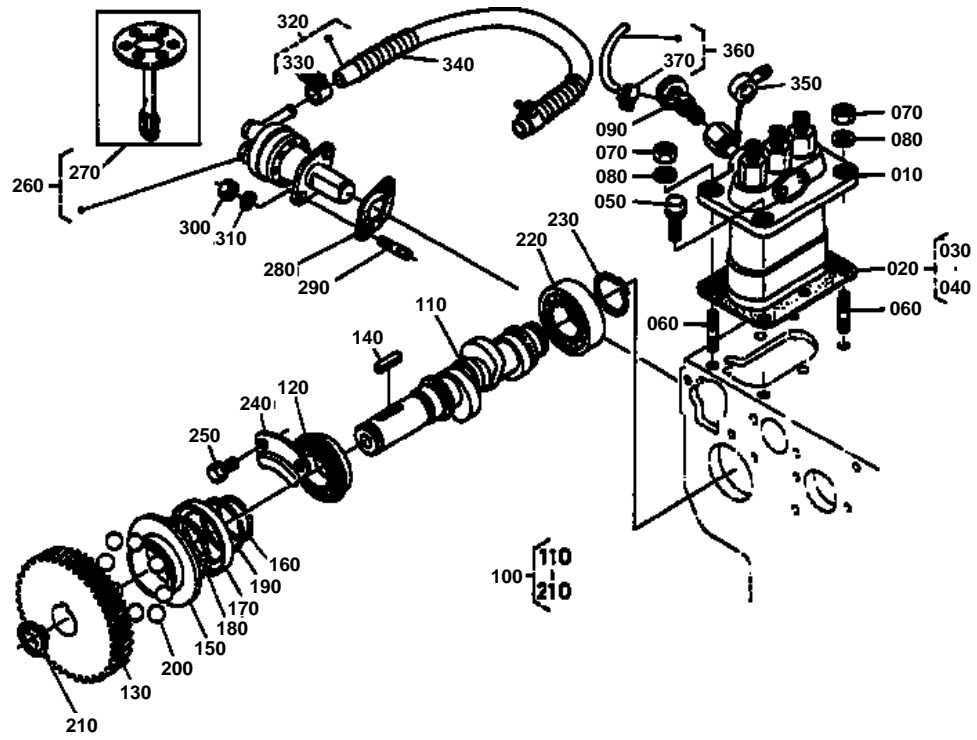


FLYWHEEL

↔ Interchangeable; ≠ not interchangeable; ← new for old; → old for new

| REF.No | Part No. | Description | Q'ty | S.No. | I/C | REMARKS | Weight (kgf) | Weight (lb) |
|--------|-------------|-----------------|------|-------|-----|---------|--------------|-------------|
| 010 | 15541-25010 | COMP.FLYWHEEL | 1 | | | | 0 | 0 |
| 020 | 15261-63820 | GEAR,RING | 1 | | | | 0 | 0 |
| 030 | 15533-25160 | BOLT,FLYWHEEL | 5 | | | | 0 | 0 |
| 040 | 15531-25170 | WASHER,FLYWHEEL | 1 | | | | 0.04 | 0.088 |
| 050 | 15541-04620 | PLATE,REAR END | 1 | | | | 2.76 | 6.072 |
| 060 | 05012-00814 | PIN,STRAIGHT | 1 | | | | 0.006 | 0.0132 |
| 070 | 15261-91190 | BOLT | 8 | | | | 0.03 | 0.066 |

INJECTION PUMP



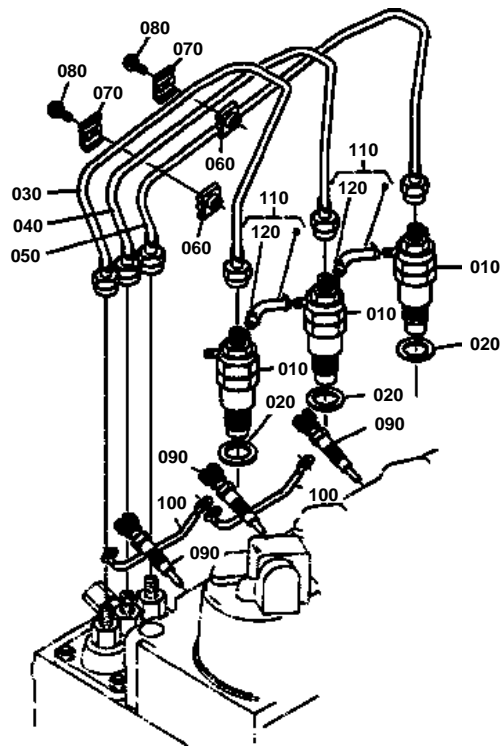


INJECTION PUMP

↔ Interchangeable; ≠ not interchangeable; ← new for old; → old for new

| REF.No | Part No. | Description | Q'ty | S.No. | I/C | REMARKS | Weight (kgf) | Weight (lb) |
|--------|-------------|----------------------|------|-------|-----|---------------------------------------|--------------|-------------|
| 010 | 15531-51010 | ASSY PUMP, INJECTION | 1 | | | REFER TO L.No.0C04-R0 FOR COMPONENTS. | 2.1 | 4.62 |
| 020 | 19491-52100 | ASSY SHIM | 1 | | | | 0.035 | 0.077 |
| 030 | 15321-52110 | SHIM,INJECTION PUMP | 3 | | | | 0 | 0 |
| 040 | 15381-52112 | SHIM,INJECTION PUMP | 4 | | | | 0.045 | 0.099 |
| 050 | 01123-50822 | BOLT | 2 | | | | 0.012 | 0.0264 |
| 060 | 15221-91530 | STUD | 2 | | | | 0.011 | 0.0242 |
| 070 | 02156-50080 | NUT | 2 | | | | 0.004 | 0.0088 |
| 080 | 04512-50080 | WASHER,SPRING | 2 | | | | 0 | 0 |
| 090 | 14311-60504 | ASSY COCK,JET START | 1 | | | | 0.034 | 0.0748 |
| 100 | 15381-16020 | ASSY CAMSHAFT, FUEL | 1 | | | | 1.1 | 2.42 |
| 110 | 15381-16170 | CAMSHAFT,FUEL | 1 | | | | 0.42 | 0.924 |
| 120 | 08153-06004 | BEARING,BALL | 1 | | | | 0.07 | 0.154 |
| 130 | 15261-51150 | GEAR,INJECTION PUMP | 1 | | | | 0.463 | 1.0186 |
| 140 | 05712-00520 | KEY,FEATHER | 1 | | | | 0.004 | 0.0088 |
| 150 | 15261-55450 | SLEEVE,GOVERNOR | 1 | | | | 0.058 | 0.1276 |
| 160 | 15261-55470 | CIR-CLIP,GOV. SLEEVE | 1 | | | | 0.002 | 0.0044 |
| 170 | 15261-55690 | CASE,GOVERNOR BALL | 1 | | | | 0 | 0 |
| 180 | 07715-03205 | BALL | 30 | | | | 0.001 | 0.0022 |
| 190 | 15261-55740 | CIR-CLIP | 1 | | | | 0.002 | 0.0044 |
| 200 | 07715-03217 | BALL | 8 | | | | 0.01 | 0.022 |
| 210 | 04612-00180 | CIR-CLIP,EXTERNAL | 1 | | | | 0.001 | 0.0022 |
| 220 | 08103-06004 | BEARING,BALL | 1 | | | | 0.066 | 0.1452 |
| 230 | 04612-00200 | CIR-CLIP,EXTERNAL | 1 | | | | 0.001 | 0.0022 |
| 240 | 15261-16320 | STOPPER | 1 | | | | 0.037 | 0.0814 |
| 250 | 01023-50612 | BOLT | 2 | | | | 0.005 | 0.011 |
| 260 | 15381-52030 | ASSY PUMP,FUEL | 1 | | | | 0 | 0 |
| 270 | 15381-52040 | COMP.DIAPHRAGM | 1 | | | | 0 | 0 |
| 280 | 15241-52140 | GASKET,FUEL PUMP | 1 | | | | 0 | 0 |
| 290 | 01513-50616 | STUD | 2 | | | | 0.004 | 0.0088 |
| 300 | 02056-50060 | NUT | 2 | | | | 0.002 | 0.0044 |
| 310 | 04512-50060 | WASHER,SPRING | 2 | | | | 0 | 0 |
| 320 | 15531-42010 | ASSY PIPE,FUEL | 1 | | | | 0.056 | 0.1232 |
| 330 | 14301-42750 | CLIP,PIPE | 2 | | | | 0.005 | 0.011 |
| 340 | 67111-58320 | SPRING,PIPE PROTECT. | 1 | | | | 0.02 | 0.044 |
| 350 | 14111-42410 | JOINT | 1 | | | | 0.025 | 0.055 |
| 360 | 15531-42870 | ASSY PIPE,JET START | 1 | | | | 0.02 | 0.044 |
| 370 | 10244-42320 | CLIP,PIPE | 2 | | | | 0.001 | 0.0022 |

NOZZLE HOLDER



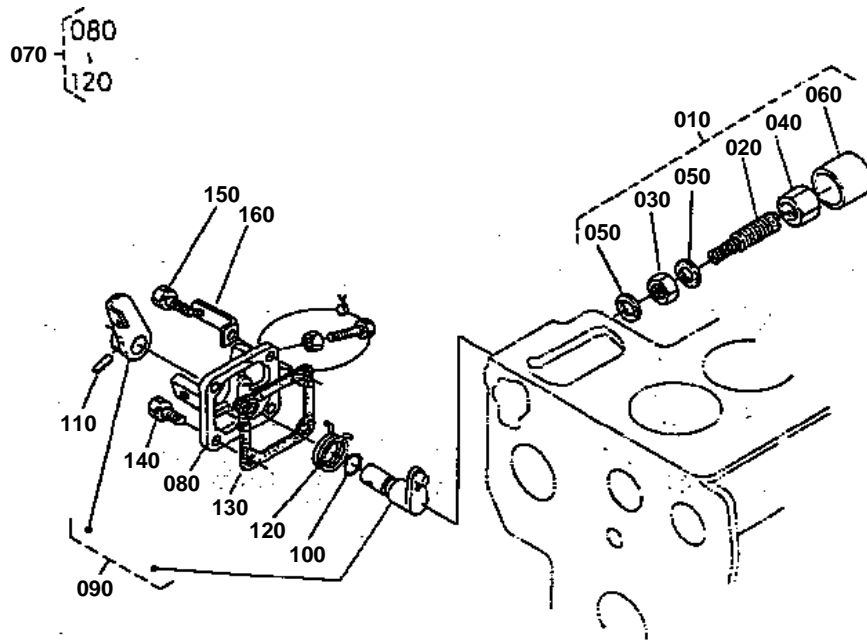


NOZZLE HOLDER

↔ Interchangeable; ≠ not interchangeable; ← new for old; → old for new

| REF.No | Part No. | Description | Q'ty | S.No. | I/C | REMARKS | Weight (kgf) | Weight (lb) |
|--------|-------------|------------------------|------|-------|-----|--|--------------|-------------|
| 010 | 15271-53020 | ASSY HOLDER, NOZZLE | 3 | | | REFER TO L.No.0C05-R0 FOR COMPONENTS. | 0.26 | 0.572 |
| 020 | 17011-53620 | GASKET | 3 | | | | 0.003 | 0.0066 |
| 030 | 15261-53710 | PIPE,INJECTION | 1 | | | | 0.103 | 0.2266 |
| 040 | 15261-53720 | PIPE,INJECTION | 1 | | | | 0.1 | 0.22 |
| 050 | 15381-53730 | PIPE,INJECTION | 1 | | | | 0.102 | 0.2244 |
| 060 | 15121-53850 | CLAMP,PIPE | 2 | | | | 0 | 0 |
| 070 | 15121-53860 | CLAMP,PIPE | 2 | | | | 0 | 0 |
| 080 | 03024-50520 | SCREW | 2 | | | | 0.004 | 0.0088 |
| 090 | 15951-65510 | PLUG,GLOW | 3 | | | | 0.03 | 0.066 |
| 100 | 15261-65560 | CORD,GLOW PLUG | 2 | | | | 0.005 | 0.011 |
| 110 | 15261-42500 | ASSY PIPE,OVER FLOW | 2 | | | | 0.02 | 0.044 |
| 120 | 10244-42320 | CLIP,PIPE | 4 | | | | 0.001 | 0.0022 |

ENGINE STOP LEVER



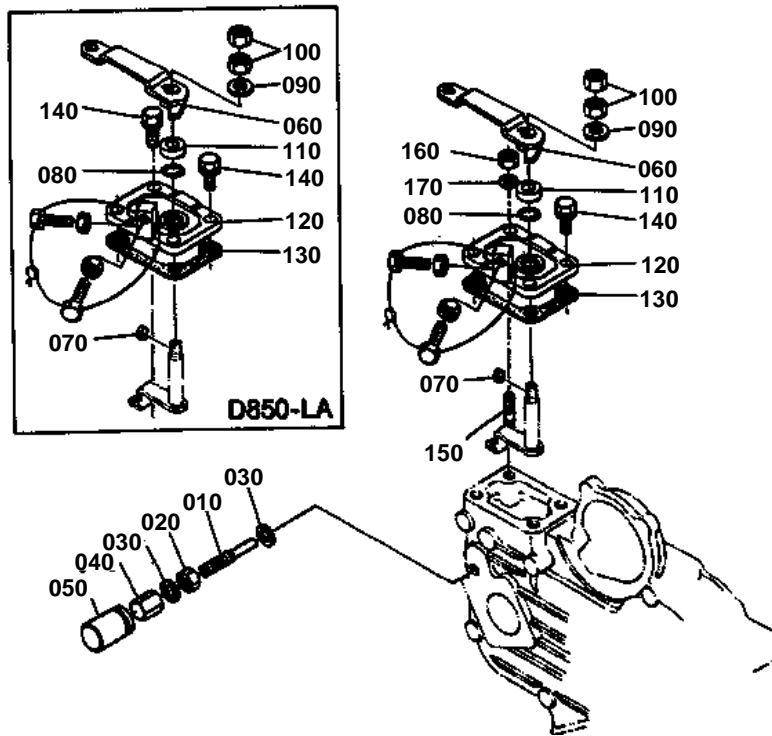


ENGINE STOP LEVER

↔ Interchangeable; ≠ not interchangeable; ← new for old; → old for new

| REF.No | Part No. | Description | Q'ty | S.No. | I/C | REMARKS | Weight (kgf) | Weight (lb) |
|--------|-------------|----------------------|------|---------|-----|---------|--------------|-------------|
| 010 | 15531-54090 | APPARATUS,IDLING | 1 | ≤412095 | | | 0.023 | 0.0506 |
| 010 | 15752-54090 | APPARATUS,IDLING | 1 | ≥412096 | ← | | 0 | 0 |
| 020 | 15531-54100 | ASSY BOLT,ADJUSTING | 1 | ≤412095 | | | 0.005 | 0.011 |
| 020 | 15752-54100 | ASSY BOLT,ADJUSTING | 1 | ≥412096 | ← | | 0 | 0 |
| 030 | 15261-92020 | NUT | 1 | | | | 0.004 | 0.0088 |
| 040 | 15261-92330 | NUT,CAP | 1 | | | | 0.01 | 0.022 |
| 050 | 15021-33660 | GASKET | 2 | | | | 0.001 | 0.0022 |
| 060 | 15261-54270 | CAP | 1 | | | | 0.002 | 0.0044 |
| 070 | 15531-57700 | ASSY LVR.ENGINE STOP | 1 | | | | 0 | 0 |
| 080 | 15531-51650 | COVER,INJECTION PUMP | 1 | | | | 0 | 0 |
| 090 | 15531-57710 | ASSY SHAFT,LEVER | 1 | | | | 0 | 0 |
| 100 | 04811-10070 | RING | 1 | | | | 0.001 | 0.0022 |
| 110 | 05411-00420 | PIN,SPRING | 1 | | | | 0.001 | 0.0022 |
| 120 | 15611-57510 | SPRING,RETURN | 1 | | | | 0.003 | 0.0066 |
| 130 | 15231-05130 | GASKET,BREATHER | 1 | | | | 0 | 0 |
| 140 | 01023-50618 | BOLT | 3 | | | | 0.006 | 0.0132 |
| 150 | 01023-50620 | BOLT | 1 | | | | 0.006 | 0.0132 |
| 160 | 15531-57480 | HOLDER,WIRE | 1 | | | | 0.015 | 0.033 |

SPEED CONTROL PLATE



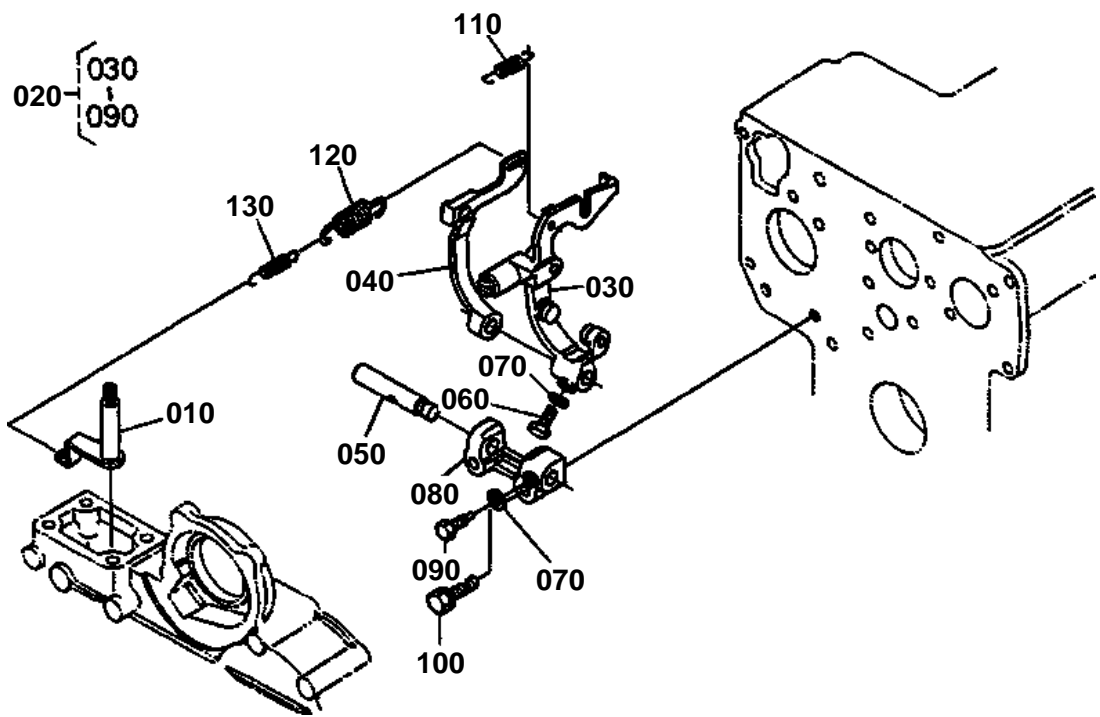


SPEED CONTROL PLATE

↔ Interchangeable; ≠ not interchangeable; ← new for old; → old for new

| REF.No | Part No. | Description | Q'ty | S.No. | I/C | REMARKS | Weight (kgf) | Weight (lb) |
|--------|-------------|---------------------|------|-------|-----|---------|--------------|-------------|
| 010 | 15531-54120 | BOLT,ADJUSTING | 1 | | | | 0.009 | 0.0198 |
| 020 | 15531-92030 | NUT | 1 | | | | 0.005 | 0.011 |
| 030 | 15601-96650 | GASKET | 2 | | | | 0.001 | 0.0022 |
| 040 | 15601-54220 | NUT,CAP | 1 | | | | 0 | 0 |
| 050 | 15601-54420 | CAP | 1 | | | | 0 | 0 |
| 060 | 15531-57150 | LEVER,SPEED CONTROL | 1 | | | | 0.04 | 0.088 |
| 070 | 15261-95010 | KEY,FEATHER | 1 | | | | 0.001 | 0.0022 |
| 080 | 04811-00070 | RING | 1 | | | | 0.001 | 0.0022 |
| 090 | 04013-50060 | WASHER,PLAIN | 1 | | | | 0 | 0 |
| 100 | 02012-50060 | NUT | 2 | | | | 0 | 0 |
| 110 | 15261-57380 | DISK,FRICTION | 1 | | | | 0 | 0 |
| 120 | 15531-57110 | PLATE,SPEED CONTROL | 1 | | | | 0.06 | 0.132 |
| 130 | 15261-57210 | GASKET | 1 | | | | 0 | 0 |
| 140 | 01023-50620 | BOLT | 3 | | | | 0.006 | 0.0132 |
| 150 | 15221-88210 | STUD | 1 | | | | 0.005 | 0.011 |
| 160 | 02056-50060 | NUT | 1 | | | | 0.002 | 0.0044 |
| 170 | 04512-50060 | WASHER,SPRING | 1 | | | | 0 | 0 |

GOVERNOR

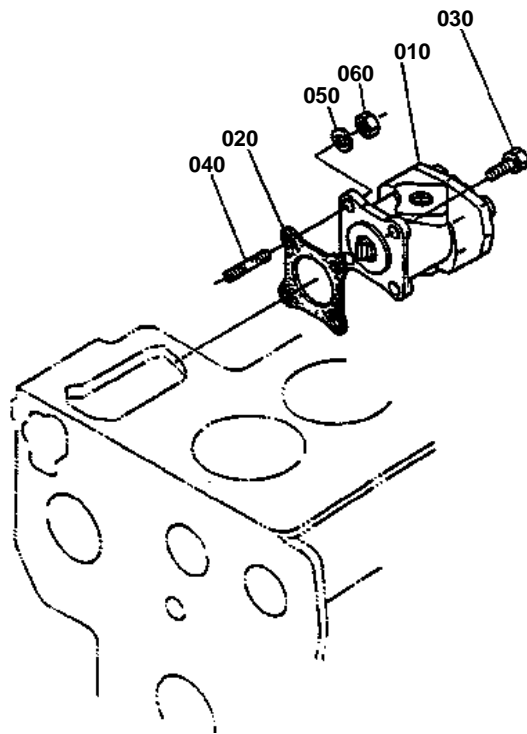


**GOVERNOR**

↔ Interchangeable; ≠ not interchangeable; ← new for old; → old for new

| REF.No | Part No. | Description | Q'ty | S.No. | I/C | REMARKS | Weight (kgf) | Weight (lb) |
|--------|-------------|---------------------|------|-------|-----|---------|--------------|-------------|
| 010 | 15531-56020 | COMP.LEVER,GOVERNOR | 1 | | | | 0.026 | 0.0572 |
| 020 | 15752-56050 | ASSY LEVER,FORK | 1 | | | | 0.3 | 0.66 |
| 030 | 15752-56040 | COMP.LEVER,FORK | 1 | | | | 0.15 | 0.33 |
| 040 | 15531-56130 | LEVER,FORK | 1 | | | | 0.075 | 0.165 |
| 050 | 15261-56150 | SHAFT,FORK LEVER | 1 | | | | 0.032 | 0.0704 |
| 060 | 01053-50516 | BOLT | 1 | | | | 0.003 | 0.0066 |
| 070 | 04512-50050 | WASHER,SPRING | 2 | | | | 0 | 0 |
| 080 | 15261-56230 | HOLDER,FORK LEVER | 1 | | | | 0.038 | 0.0836 |
| 090 | 15261-66410 | BOLT | 1 | | | | 0.003 | 0.0066 |
| 100 | 01023-50628 | BOLT | 2 | | | | 0.015 | 0.033 |
| 110 | 15221-56480 | SPRING,START | 1 | | | | 0.008 | 0.0176 |
| 120 | 15531-56410 | SPRING,GOVERNOR | 1 | | | | 0.007 | 0.0154 |
| 130 | 15531-56420 | SPRING,GOVERNOR | 1 | | | | 0.003 | 0.0066 |

HYDRAULIC PUMP

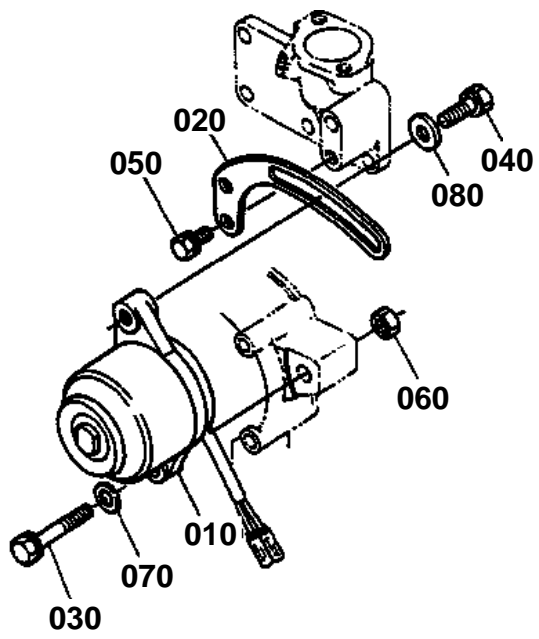




HYDRAULIC PUMP

↔ Interchangeable; ≠ not interchangeable; ← new for old; → old for new

| REF.No | Part No. | Description | Q'ty | S.No. | I/C | REMARKS | Weight (kgf) | Weight (lb) |
|--------|-------------|----------------------|------|-------|-----|---------------------------------------|--------------|-------------|
| 010 | 67111-76100 | ASSY PUMP, HYDRAULIC | 1 | | | REFER TO L.No.0C08-L0 FOR COMPONENTS. | 0 | 0 |
| 020 | 15231-87130 | GASKET | 1 | | | | 0 | 0 |
| 030 | 01123-50825 | BOLT | 3 | | | | 0.013 | 0.0286 |
| 040 | 01513-50825 | STUD | 1 | | | | 0 | 0 |
| 050 | 04512-50080 | WASHER,SPRING | 1 | | | | 0 | 0 |
| 060 | 02156-50080 | NUT | 1 | | | | 0.004 | 0.0088 |

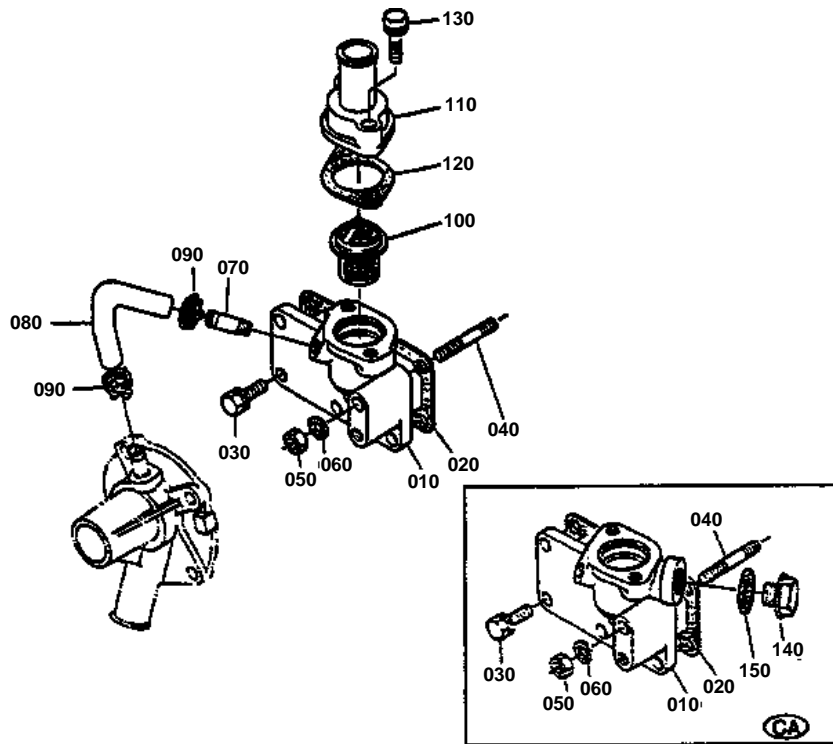


**DYNAMO**

↔ Interchangeable; ≠ not interchangeable; ← new for old; → old for new

| REF.No | Part No. | Description | Q'ty | S.No. | I/C | REMARKS | Weight (kgf) | Weight (lb) |
|--------|-------------|------------------|------|-------|-----|---------------------------------------|--------------|-------------|
| 010 | 15531-64013 | ASSY DYNAMO | 1 | | | REFER TO L.No.0C07-L0 FOR COMPONENTS. | 0 | 0 |
| 020 | 15531-64420 | STAY, DYNAMO | 1 | | | | 0.09 | 0.198 |
| 030 | 01023-50616 | BOLT | 1 | | | | 0.005 | 0.011 |
| 040 | 01123-50825 | BOLT | 1 | | | | 0.013 | 0.0286 |
| 050 | 01123-50860 | BOLT | 1 | | | | 0.026 | 0.0572 |
| 060 | 02056-50080 | NUT | 1 | | | | 0.005 | 0.011 |
| 070 | 04013-50080 | WASHER, PLAIN | 1 | | | | 0 | 0 |
| 080 | 04015-50080 | WASHER, PLAIN | 1 | | | | 0 | 0 |

WATER FLANGE



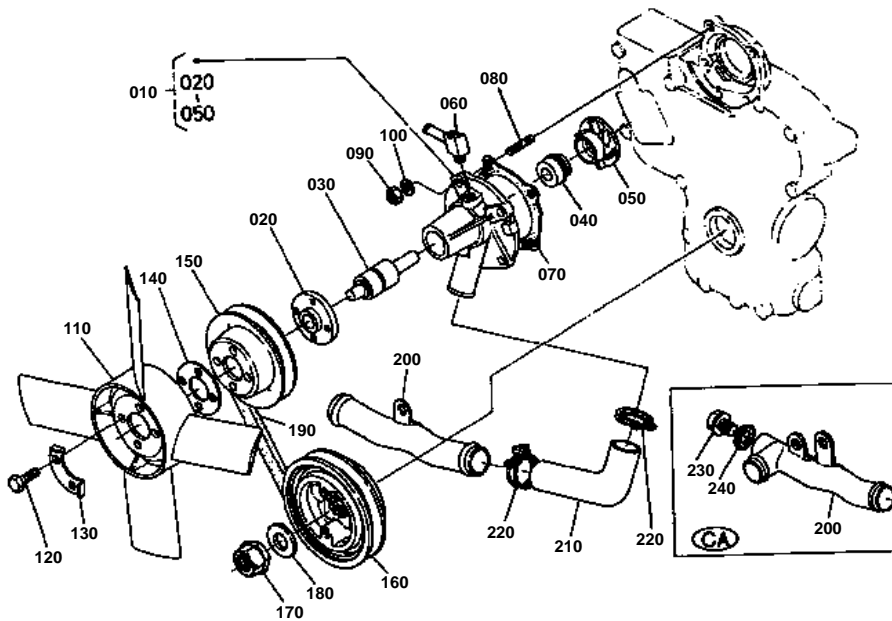


WATER FLANGE

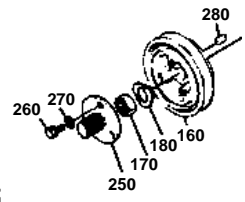
↔ Interchangeable; ≠ not interchangeable; ← new for old; → old for new

| REF.No | Part No. | Description | Q'ty | S.No. | I/C | REMARKS | Weight (kgf) | Weight (lb) |
|--------|-------------|---------------------|------|-------|-----|---------|--------------|-------------|
| 010 | 15531-72910 | FLANGE,WATER | 1 | | | | 0.21 | 0.462 |
| 010 | 15582-72910 | FLANGE,WATER | 1 | | | [CA] | 0.3 | 0.66 |
| 020 | 15261-72920 | GASKET,WATER FLANGE | 1 | | | | 0 | 0 |
| 030 | 01023-50616 | BOLT | 5 | | | | 0.005 | 0.011 |
| 040 | 01513-50655 | STUD | 1 | | | | 0.013 | 0.0286 |
| 050 | 02056-50060 | NUT | 1 | | | | 0.002 | 0.0044 |
| 060 | 04512-50060 | WASHER,SPRING | 1 | | | | 0 | 0 |
| 070 | 15531-73340 | PIPE,WATER RETURN | 1 | | | | 0.01 | 0.022 |
| 080 | 15531-73350 | PIPE,WATER RETURN | 1 | | | | 0.02 | 0.044 |
| 090 | 15531-73360 | BAND,PIPE | 2 | | | | 0.007 | 0.0154 |
| 100 | 15531-73010 | ASSY THERMOSTAT | 1 | | | | 0.07 | 0.154 |
| 110 | 15531-73260 | COVER,THERMOSTAT | 1 | | | | 0.068 | 0.1496 |
| 120 | 15531-73270 | GASKET | 1 | | | | 0 | 0 |
| 130 | 01023-50635 | BOLT | 2 | | | | 0.01 | 0.022 |
| 140 | 34150-36730 | PLUG | 1 | | | [CA] | 0.038 | 0.0836 |
| 150 | 04714-00300 | GASKET | 1 | | | [CA] | 0.002 | 0.0044 |

WATER PUMP



- REF.No.160 15531-7428-0
- REF.No.170 15261-2336-0
- REF.No.180 15372-2338-0
- REF.No.250 66704-8853-0
- REF.No.260 01123-50825
- REF.No.270 04013-50080
- REF.No.280 05712-00515



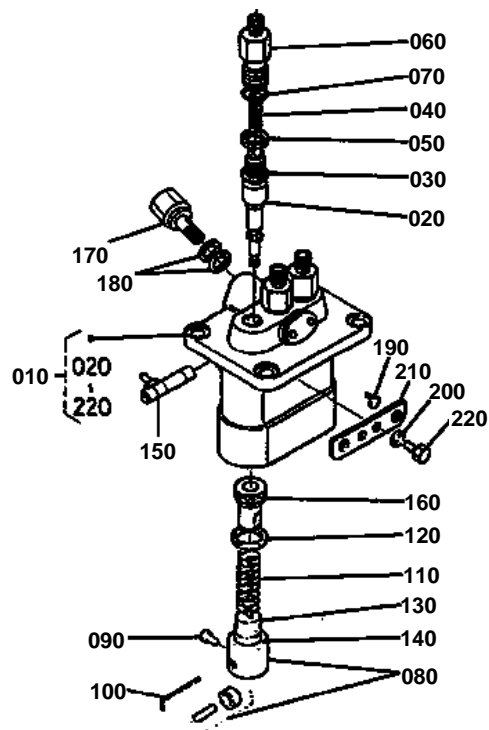


WATER PUMP

↔ Interchangeable; ≠ not interchangeable; ← new for old; → old for new

| REF.No | Part No. | Description | Q'ty | S.No. | I/C | REMARKS | Weight (kgf) | Weight (lb) |
|--------|-------------|----------------------|------|----------|-----|---------|--------------|-------------|
| 010 | 15531-73030 | ASSY PUMP,WATER | 1 | ←=369054 | | | 0 | 0 |
| 010 | 15752-73030 | ASSY PUMP,WATER | 1 | ≥=369055 | ≠ | | 0 | 0 |
| 020 | 15531-73520 | FLANGE,WATER PUMP | 1 | ←=369054 | | | 0.13 | 0.286 |
| 020 | 15752-73520 | FLANGE,WATER PUMP | 1 | ≥=369055 | ≠ | | 0 | 0 |
| 030 | 15531-73550 | BEARING | 1 | ←=369054 | | | 0.16 | 0.352 |
| 030 | 15752-73550 | BEARING | 1 | ≥=369055 | ≠ | | 0 | 0 |
| 040 | 15531-73050 | ASSY SEAL,MECHANICAL | 1 | | | | 0 | 0 |
| 050 | 15531-73510 | IMPELLER,WATER PUMP | 1 | | | | 0.112 | 0.2464 |
| 060 | 15531-73340 | PIPE,WATER RETURN | 1 | | | | 0.01 | 0.022 |
| 070 | 15531-73430 | GASKET,WATER PUMP | 1 | | | | 0 | 0 |
| 080 | 01518-50620 | STUD | 4 | | | | 0.006 | 0.0132 |
| 090 | 02056-50060 | NUT | 4 | | | | 0.002 | 0.0044 |
| 100 | 04512-50060 | WASHER,SPRING | 4 | | | | 0 | 0 |
| 110 | 15531-74110 | FAN | 1 | | | | 0.2 | 0.44 |
| 120 | 01053-50616 | BOLT | 4 | | | | 0.005 | 0.011 |
| 130 | 15131-74230 | WASHER,FAN | 2 | | | | 0.005 | 0.011 |
| 140 | 15752-74150 | COLLAR,FAN | 1 | ≥=369055 | | | 0.07 | 0.154 |
| 150 | 15531-74250 | PULLEY,FAN | 1 | | | | 0.21 | 0.462 |
| 160 | 15532-74280 | PULLEY,FAN DRIVE | 1 | ←=369054 | | | 1.1 | 2.42 |
| 160 | 15752-74280 | PULLEY,FAN DRIVE | 1 | ≥=369055 | ≠ | | 1.2 | 2.64 |
| 170 | 15261-23360 | NUT,CRANKSHAFT | 1 | ←=369054 | | | 0.034 | 0.0748 |
| 170 | 15752-23360 | NUT,CRANKSHAFT | 1 | ≥=369055 | ≠ | | 0.04 | 0.088 |
| 180 | 15372-23380 | WASHER,CRANKSHAFT | 1 | ←=369054 | | | 0.007 | 0.0154 |
| 180 | 15752-23380 | WASHER,CRANKSHAFT | 1 | ≥=369055 | ≠ | | 0.01 | 0.022 |
| 190 | 15531-72530 | BELT,FAN | 1 | | | | 0.085 | 0.187 |
| 200 | 15531-72860 | PIPE,WATER | 1 | | | | 0.11 | 0.242 |
| 200 | 15554-72860 | PIPE,WATER | 1 | | | [CA] | 0.215 | 0.473 |
| 210 | 15531-72870 | PIPE,WATER | 1 | | | | 0.052 | 0.1144 |
| 220 | 15261-72780 | BAND | 2 | | | | 0.024 | 0.0528 |
| 230 | 34150-36730 | PLUG | 1 | | | [CA] | 0.038 | 0.0836 |
| 240 | 04714-00300 | GASKET | 1 | | | [CA] | 0.002 | 0.0044 |
| 250 | 66704-88530 | FLANGE,PTO | 1 | ←=369054 | | | 0.4 | 0.88 |
| 260 | 01123-50825 | BOLT | 3 | ←=369054 | | | 0.013 | 0.0286 |
| 270 | 04013-50080 | WASHER,PLAIN | 3 | ←=369054 | | | 0 | 0 |
| 280 | 05712-00515 | KEY,FEATHER | 1 | ←=369054 | | | 0.003 | 0.0066 |

INJECTION PUMP [SECTION PARTS]



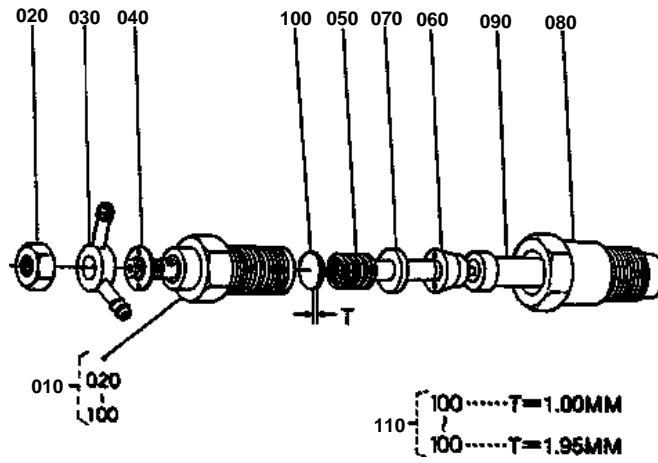


INJECTION PUMP [SECTION PARTS]

↔ Interchangeable; ≠ not interchangeable; ← new for old; → old for new

| REF.No | Part No. | Description | Q'ty | S.No. | I/C | REMARKS | Weight (kgf) | Weight (lb) |
|--------|-------------|---------------------|------|-------|-----|---------|--------------|-------------|
| 010 | 15531-51010 | ASSY PUMP,INJECTION | 1 | | | | 2.1 | 4.62 |
| 020 | 15261-51050 | PLUNGER | 3 | | | | 0.04 | 0.088 |
| 030 | 15261-51030 | VALVE,DELIVERY | 3 | | | | 0.011 | 0.0242 |
| 040 | 15331-51230 | SPRING,DELIV.VALVE | 3 | | | | 0.001 | 0.0022 |
| 050 | 15331-51240 | GASKET | 3 | | | | 0.001 | 0.0022 |
| 060 | 15331-51220 | HOLDER,DELIV.VALVE | 3 | | | | 0.053 | 0.1166 |
| 070 | 15331-96760 | O RING | 3 | | | | 0.001 | 0.0022 |
| 080 | 15331-51070 | ASSY TAPPET | 3 | | | | 0.036 | 0.0792 |
| 090 | 15331-51250 | PIN,TAPPET GUIDE | 3 | | | | 0.001 | 0.0022 |
| 100 | 15331-51430 | PIN,CLAMP | 1 | | | | 0.001 | 0.0022 |
| 110 | 15331-51280 | SPRING,PLUNGER | 3 | | | | 0 | 0 |
| 120 | 15331-51270 | SEAT,SPRING UPPER | 3 | | | | 0.001 | 0.0022 |
| 130 | 15331-51290 | SEAT,SPRING UNDER | 3 | | | | 0.001 | 0.0022 |
| 140 | 15381-51490 | SHIM | 1 | | | | 0.008 | 0.0176 |
| 150 | 15331-51062 | RACK,CONTROL | 1 | | | | 0.04 | 0.088 |
| 160 | 15331-51380 | SLEEVE,CONTROL | 3 | | | | 0.012 | 0.0264 |
| 170 | 15531-51320 | SCREW,FOLLOW | 1 | | | | 0.034 | 0.0748 |
| 180 | 15331-96650 | GASKET | 2 | | | | 0.001 | 0.0022 |
| 190 | 15331-51480 | COLLAR | 2 | | | | 0.005 | 0.011 |
| 200 | 15381-94090 | WASHER,SPRING | 2 | | | | 0.002 | 0.0044 |
| 210 | 15381-51390 | PLATE,ADJUSTING | 1 | | | | 0.008 | 0.0176 |
| 220 | 15331-91010 | BOLT | 2 | | | | 0.034 | 0.0748 |

NOZZLE HOLDER [SECTION PARTS]



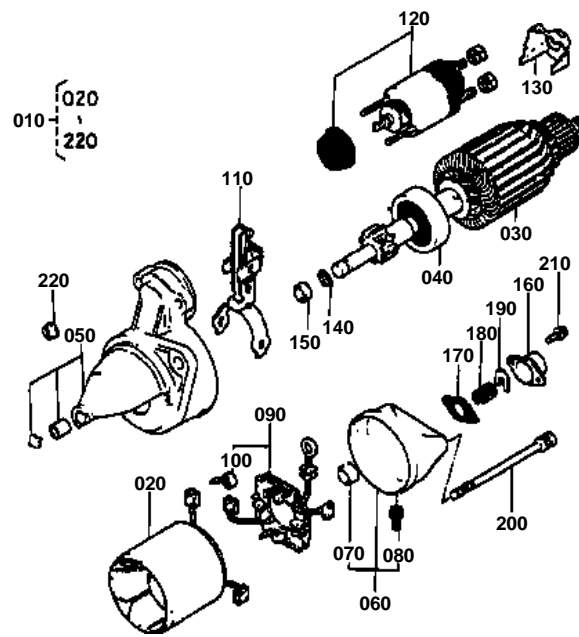


NOZZLE HOLDER [SECTION PARTS]

↔ Interchangeable; ≠ not interchangeable; ← new for old; → old for new

| REF.No | Part No. | Description | Q'ty | S.No. | I/C | REMARKS | Weight (kgf) | Weight (lb) |
|--------|-------------|--------------------|------|-------|-----|---------|--------------|-------------|
| 010 | 15271-53020 | ASSY HOLDER,NOZZLE | 3 | | | | 0.26 | 0.572 |
| 020 | 15221-92020 | NUT | 3 | | | | 0.011 | 0.0242 |
| 030 | 15221-95690 | JOINT,EYE | 3 | | | | 0.022 | 0.0484 |
| 040 | 15221-94020 | WASHER,PLAIN | 3 | | | | 0.002 | 0.0044 |
| 050 | 15221-53170 | SPRING,NOZZLE | 3 | | | | 0.01 | 0.022 |
| 060 | 15221-53350 | PIECE,DISTANCE | 3 | | | | 0.016 | 0.0352 |
| 070 | 15221-53160 | ROD,PUSH | 3 | | | | 0.003 | 0.0066 |
| 080 | 15221-53280 | NUT,NOZZLE | 3 | | | | 0.068 | 0.1496 |
| 090 | 15021-53610 | PIECE,NOZZLE | 3 | | | | 0 | 0 |
| 100 | 15221-98110 | WASHER,ADJUSTING | 3 | | | 1.00MM | 0.001 | 0.0022 |
| 100 | 15221-98120 | WASHER,ADJUSTING | 3 | | | 1.05MM | 0.001 | 0.0022 |
| 100 | 15221-98130 | WASHER,ADJUSTING | 3 | | | 1.10MM | 0.001 | 0.0022 |
| 100 | 15221-98140 | WASHER,ADJUSTING | 3 | | | 1.15MM | 0.001 | 0.0022 |
| 100 | 15221-98150 | WASHER,ADJUSTING | 3 | | | 1.20MM | 0.001 | 0.0022 |
| 100 | 15221-98160 | WASHER,ADJUSTING | 3 | | | 1.25MM | 0.001 | 0.0022 |
| 100 | 15221-98170 | WASHER,ADJUSTING | 3 | | | 1.30MM | 0.001 | 0.0022 |
| 100 | 15221-98180 | WASHER,ADJUSTING | 3 | | | 1.35MM | 0.001 | 0.0022 |
| 100 | 15221-98190 | WASHER,ADJUSTING | 3 | | | 1.40MM | 0.002 | 0.0044 |
| 100 | 15221-98200 | WASHER,ADJUSTING | 3 | | | 1.45MM | 0.001 | 0.0022 |
| 100 | 15221-98210 | WASHER,ADJUSTING | 3 | | | 1.50MM | 0.001 | 0.0022 |
| 100 | 15221-98220 | WASHER,ADJUSTING | 3 | | | 1.55MM | 0.003 | 0.0066 |
| 100 | 15221-98230 | WASHER,ADJUSTING | 3 | | | 1.60MM | 0.003 | 0.0066 |
| 100 | 15221-98240 | WASHER,ADJUSTING | 3 | | | 1.65MM | 0.002 | 0.0044 |
| 100 | 15221-98250 | WASHER,ADJUSTING | 3 | | | 1.70MM | 0.002 | 0.0044 |
| 100 | 15221-98260 | WASHER,ADJUSTING | 3 | | | 1.75MM | 0.002 | 0.0044 |
| 100 | 15221-98270 | WASHER,ADJUSTING | 3 | | | 1.80MM | 0.002 | 0.0044 |
| 100 | 15221-98280 | WASHER,ADJUSTING | 3 | | | 1.85MM | 0.002 | 0.0044 |
| 100 | 15221-98290 | WASHER,ADJUSTING | 3 | | | 1.90MM | 0.002 | 0.0044 |
| 100 | 15221-98300 | WASHER,ADJUSTING | 3 | | | 1.95MM | 0.003 | 0.0066 |
| 110 | 15221-98100 | ASSY WASHER | 3 | | | | 0.03 | 0.066 |

STARTER [SECTION PARTS]





STARTER [SECTION PARTS]

↔ Interchangeable; ≠ not interchangeable; ← new for old; → old for new

| REF.No | Part No. | Description | Q'ty | S.No. | I/C | REMARKS | Weight (kgf) | Weight (lb) |
|--------|-------------|---------------------|------|-------|-----|---------|--------------|-------------|
| 010 | 15231-63010 | ASSY STARTER | 1 | | | | 0 | 0 |
| 020 | 14278-63080 | YOKE | 1 | | | | 1.42 | 3.124 |
| 030 | 14278-63070 | ARMATURE | 1 | | | | 1.25 | 2.75 |
| 040 | 14278-63040 | CLUTCH,OVER RUNNING | 1 | | | | 0.32 | 0.704 |
| 050 | 15231-63032 | ASSY HOUSING | 1 | | | | 0.39 | 0.858 |
| 060 | 14278-63200 | ASSY FRAME,END | 1 | | | | 0.2 | 0.44 |
| 070 | 14278-63250 | BUSH | 1 | | | | 0.002 | 0.0044 |
| 080 | 14601-63570 | PIPE,BREATHER | 1 | | | | 0.002 | 0.0044 |
| 090 | 14278-63380 | ASSY HOLDER,BRUSH | 1 | | | | 0.06 | 0.132 |
| 100 | 14278-63390 | SPRING,BRUSH | 4 | | | | 0.003 | 0.0066 |
| 110 | 14278-63050 | LEVER,DRIVE | 1 | | | | 0.06 | 0.132 |
| 120 | 15231-63022 | SWITCH,MAGNETIC | 1 | | | | 0.65 | 1.43 |
| 130 | 14278-63120 | COVER,CORD | 1 | | | | 0.003 | 0.0066 |
| 140 | 15221-94820 | PIN,SNAP | 1 | | | | 0.001 | 0.0022 |
| 150 | 15321-63250 | NUT,PINION STOP | 1 | | | | 0.005 | 0.011 |
| 160 | 14278-63510 | CAP,END FRAME | 1 | | | | 0.015 | 0.033 |
| 170 | 14278-63520 | GASKET | 1 | | | | 0.001 | 0.0022 |
| 180 | 14278-63190 | SPRING,BRAKE | 1 | | | | 0.01 | 0.022 |
| 190 | 14278-63180 | SHOE,BRAKE | 1 | | | | 0.005 | 0.011 |
| 200 | 14278-63320 | BOLT | 2 | | | | 0.02 | 0.044 |
| 210 | 03024-50414 | SCREW | 2 | | | | 0.002 | 0.0044 |
| 220 | 14278-92010 | NUT | 2 | | | | 0.001 | 0.0022 |