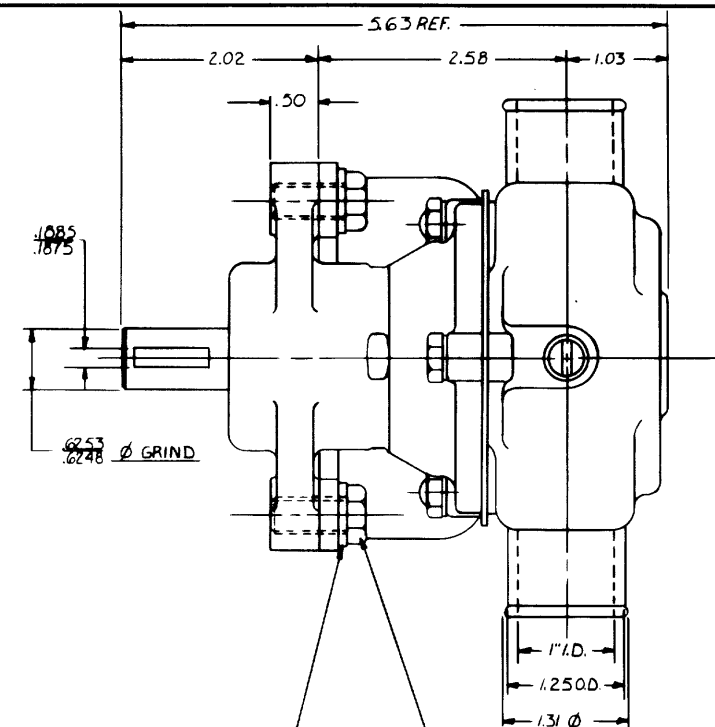
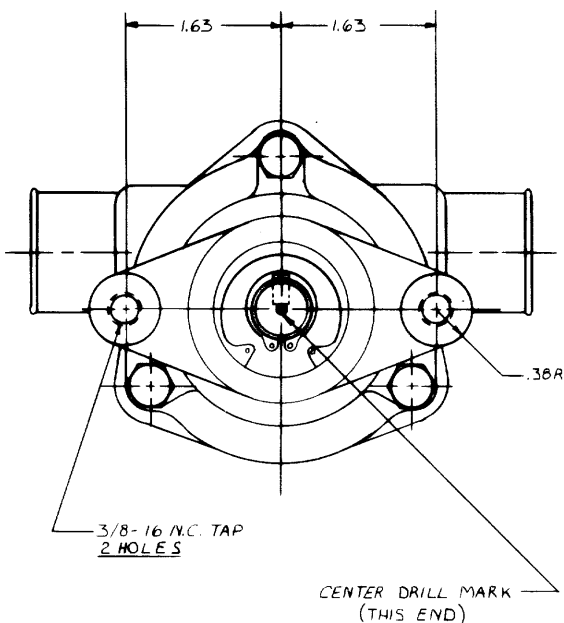
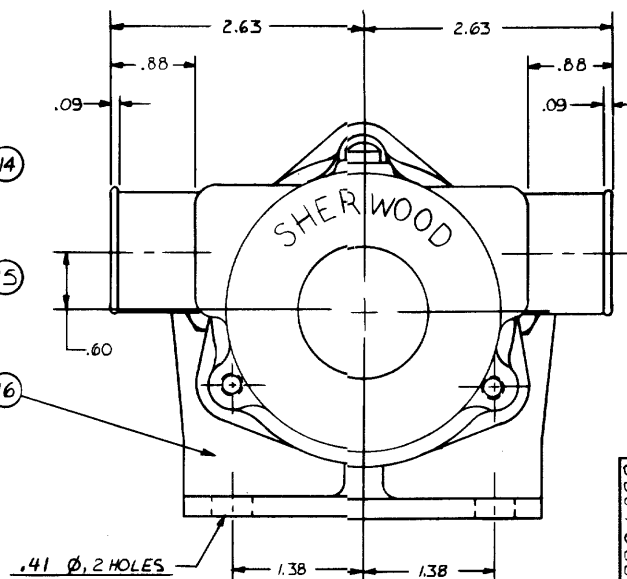
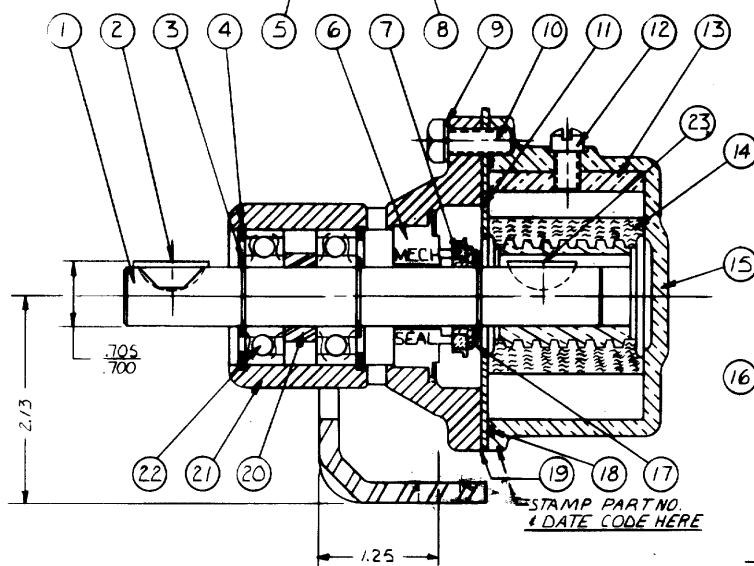


PARTS LIST

ITEM	PART NO.	DESCRIPTION	REQ'D
1	11877	SHAFT	1
2	12622	NO. 9 NON-ROK KEY	1
3	4258	RET. RING EXT.	3
4	4259	RET. RING INT.	2
5	4991	3/8 STD. LOCKWASHER	2
6	12314	MECH. SEAL	1
7	12256	SEAL SEAT	1
8	11633	CAPSCREW 3/8-16	2
9	12710	1/4 LIGHT LOCKWASHER	3
10	12851	CAPSCREW 1/4-20 x 7/8	3
11	12856	END PLATE	1
12	10515	SCREW 1/4-20 x 3/8	1
13	10944	CAM (.180)	1
14	10615	IMPELLER	1
15	12228	HOUSING	1
16	12393	MOUNTING BRACKET	1
17	4264	THRUST WASHER	1
18	12231	"O" RING	1
19	12855	GASKET	1
20	5133	SPACER BAG	1
21	12227	BODY	1
22	12211	BALL BRG.	2
23	4432	NO. 9 WOODRUFF KEY	1
24	17653	JIFFY BAG N2 S	1
25	17659	CARTON	1
26	12209	LABEL	1



FLOW CURVE: 71035R-71036R



REV.	DESCRIPTION	APPR.	DATE
D	12856 WAS 12522	SH	7/5/90
E	17644 WAS 17636	SH	9/13/89
B	REDRAWN WITHOUT CHANGE	KB	12-29-84

UNLESS OTHERWISE SPECIFIED
 CAST DIMENSIONS ± .02
 FILLETS & RADII .06
 FINISH STOCK .07
 MACHINING TOLERANCE, INCHES
 XX ± .01, XXX ± .005
 SURFACE ROUGHNESS
 ANGLES ± 0° 30'
 CORNER BREAKS .01 MAX.
 PARALLELISM .001
 FLATNESS .001
 SQUARENESS .001
 CONCENTRICITY .001
 ROUNDNESS .0002
 RUNOUT .001

SHERWOOD A DIVISION OF HYPRO CORPORATION 6331 E. JEFFERSON AVE. • DETROIT, MICHIGAN 48227			
DRAFTSMAN R.I.	DATE 11-6-79	CHECKER RBM	DATE 11-15-79
TITLE PUMP ASSEMBLY - RUBBER IMPELLER			
MATERIAL SEE DETAILS		DWG. NO. G 3	

PROJ. 289